

RE-MED: Application of innovation for the development of the circular economy for sustainable construction in the Mediterranean

Analysis of the Local Context

- Action strategy

Construction of Road Section

- Quality assurance & auditing

Development of a Technical Guide C&DW Management

- Lebanese context
- Includes valuation of C&DW in road engineering

Definition of Functional Specifications

- Identification of needs
- Indicators of environmental impacts
- Local geographic parameters
- Social and economic parameters

Transfer Workshops and Field Visits

- Life cycle analysis
- Life cycle cost analysis
- Business models

Training

- Public policies relating to waste management in Lebanon
- Circular Economy
- Construction and demolition waste management

Development of a Business Model

- C&DW collection and management master plans
- Implementation and adaptation of plans
- Macroeconomic models for the public sector

Scientific Publications

- Methodologies and results of experimentation for:
- Upgrading C&DW into aggregates for road construction
- Development of a new market valuing these materials

“This project received funding from the European Union, ENI CBC Med program, education, research, technological development and innovation, under grant agreement No 28/1682.”

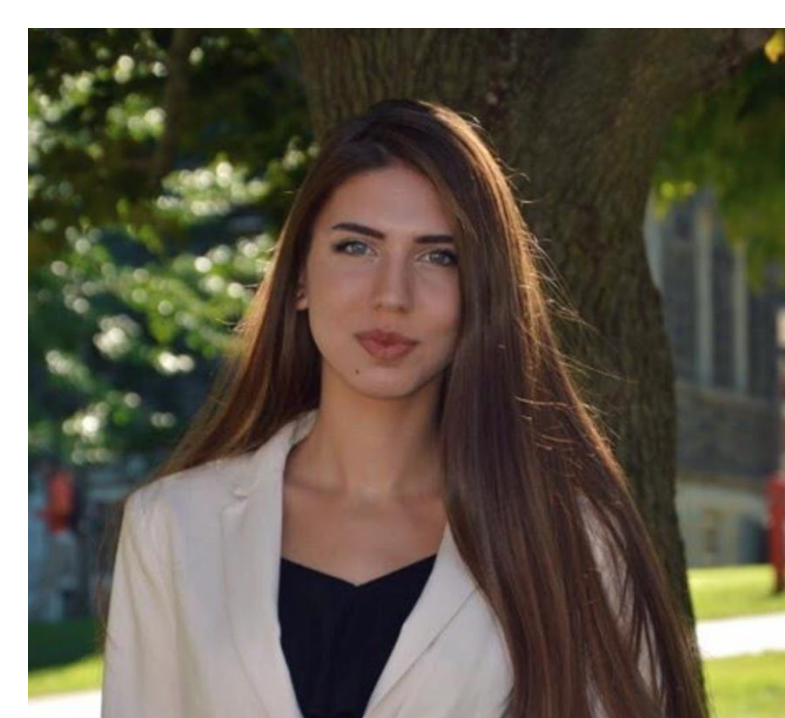
The total budget of the project is €3,084,246.92, 90% of which is co-financed by the European Union.

www.enicbcmed.eu/projects/re-med
www.aub.edu.lb

TEAM



Antoinette Abou Jaoude
Master's Student
Department of
Civil and
Environmental
Engineering



Boushra Barakat
Ph.D.
Candidate,
Department of
Civil and
Environmental
Engineering



Issam Srour
Associate
Professor,
Department of
Civil and
Environmental
Engineering