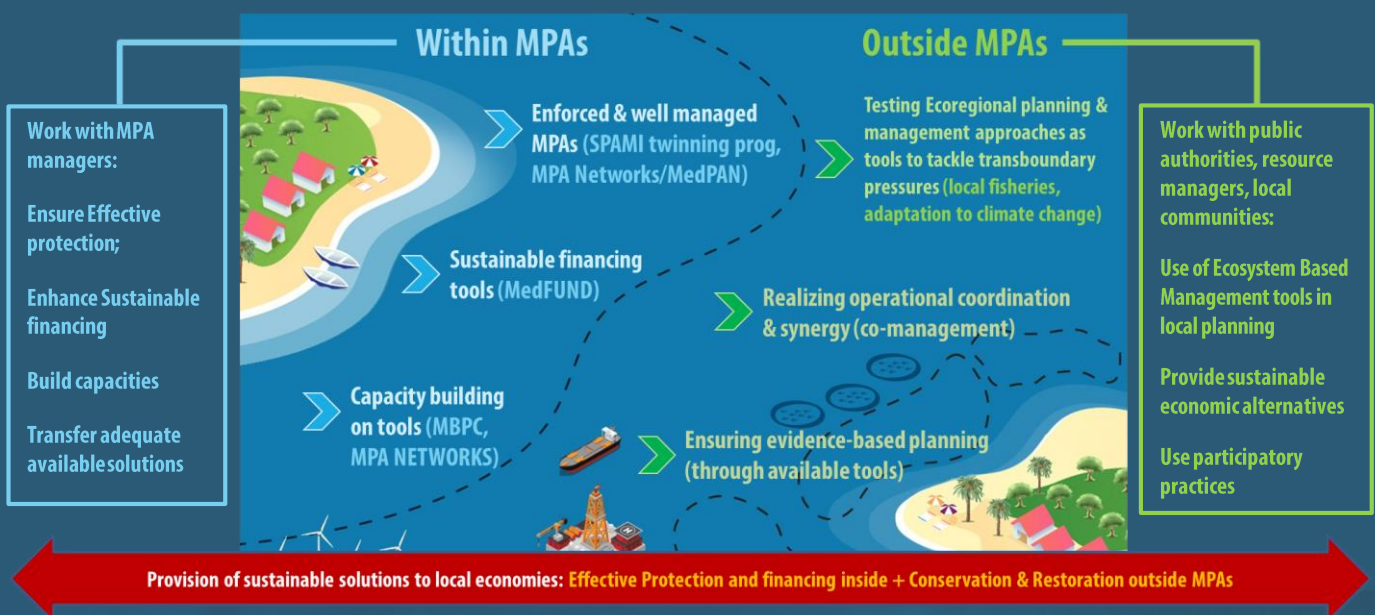


Human activities in Mediterranean coastal and marine areas are intensifying the environmental degradation and the impact of cumulative pressures on ecosystems and the services they provide. Improving the socio-ecological resilience of vulnerable areas and local economies is a solution critically needed for the long-term sustainability of the region. Setting transformative governance mechanisms, building capacities, ensuring sustainable financial and community engagement for bringing improvements to people's lives and nature form the core of the answering solution.

The ENSERES project is a capitalization project funded by the ENI CBC Med Programme and coordinated by the University of Malaga. It will seek over the next 2 years transformative changes with an integrated solution approach at transboundary level, both in and outside areas under legal protection, and involving public authorities, socio-economic actors and civil society organisations engaged in natural and urban areas, focusing on the pilot areas Gulf of Gabes (Tunisia) and Tyre (Lebanon).

## Linking cities and marine protected areas (MPAs)



**Objectives:** ENSERES aims at capitalising on available ecosystem-based management tools in integrated coastal zone management processes for preserving coastal and marine ecosystems as sustainable livelihoods for coastal urban communities in the Mediterranean basin, and transferring these tools through capacity building and mainstream its use through networking activities of the partners.

**Approach:** ENSERES focuses on transferring and mainstreaming ecosystem-based management tools to implement integrated coastal zone management (ICZM) processes in multi-level conservation and territorial practices. It will build the capacities of public authorities and natural resource users, boost sustainable financing mechanisms for co-management, and act for the operative territorialisation of actions at various scales.

## Expected results

Multi-lingual ENSERES Toolkit and training material for local to regional stakeholders

Tools transferred and adopted by users in cities and marine protected areas

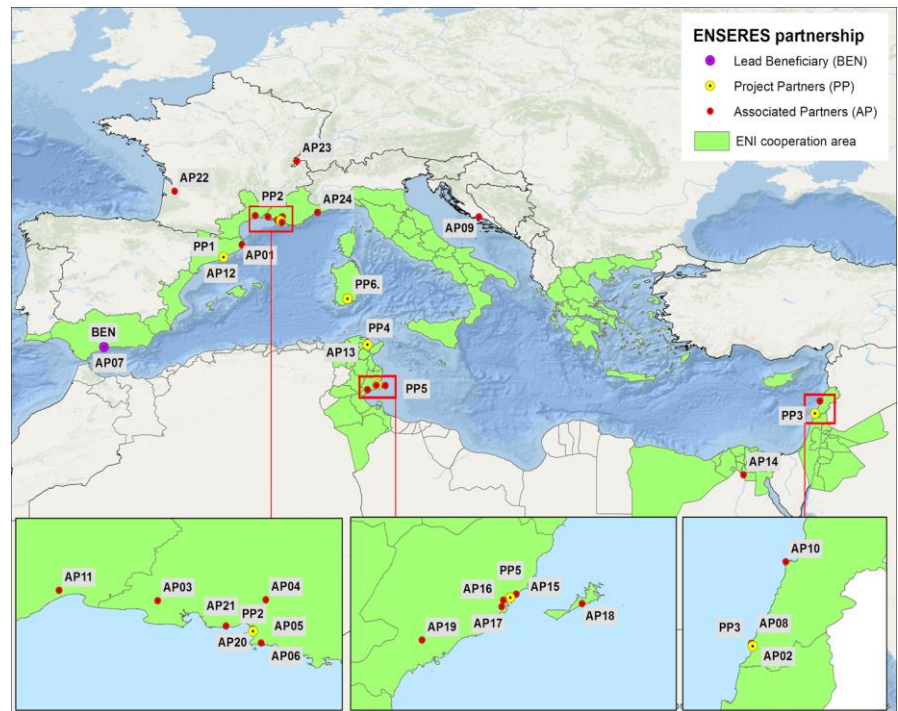
Management tools included in regional strategies

Extended Mediterranean Biodiversity Knowledge Platform



## Partnership

### Core partners



BEN - Lead Beneficiary  
University of Malaga - European Topic Centre on Spatial Analysis and Synthesis (ES)  
PP1 - MedCités Association (ES)

PP2 - Mediterranean Protected Areas Network (FR)  
PP3 - Tyre Coast Nature Reserve (LB)  
PP4 - UNEP MAP's Specially Protected Areas Regional Activity Centre (TN)

PP5 - Municipality of Sfax (TN)  
PP6 - MedSea Foundation (IT)

### Associated Partners

AP01	Parc Natural del Montgrí, les Illes Medes i el Baix Ter	AP 14	Nature Conservation Egypt (NCE)
AP02	Tyre Municipality	AP 15	Société d'Etudes et d'aménagement des côtes nord de la Ville de Sfax (TAPARURA)
AP03	Mediterranean Wetlands Initiative	AP 16	National School of Engineers (University of Sfax)
AP04	Conservatoire du Littoral	AP 17	Municipality of Thyna
AP05	Région Sud-Provenances Alpes-Cote d'Azur	AP 18	Municipality of Kerkennah
AP06	Parc National des Calanques	AP 19	Municipality of El Graiba
AP07	Mediterranean Experience of Ecotourism Network	AP 20	Plan Bleu Regional Activity Centre (Plan Bleu RAC)
AP08	Responsible Mobilities	AP 21	Parc marin de la Côte Bleue
AP09	Priority Actions Programme Regional Activity Centre (PAC/RAC)	AP 22	Blueseeds / VertigoLab
AP10	Society for the Protection of Nature in Lebanon	AP 23	International Union for the Conservation of Nature (IUCN) World Commission on Protected Areas
AP 11	Office français de la biodiversité	AP 24	The MedFund
AP 12	SCP/RAC (Regional Activity Center for Sustainable Consumption and Production)		
AP 13	Agence de Protection et d'Amenagement du Littoral (APAL)		

**Project Duration:** October 2021 - September 2023

**Project budget:** 1.099.884 €

**EU contribution under the ENI CBC Med program:** 989.895 €

**More information:** [www.enicbcmcd.eu/projects/enseres](http://www.enicbcmcd.eu/projects/enseres)  
[www.etc.uma.es/enseres](http://www.etc.uma.es/enseres)

**Contact:** [enseres@uma.es](mailto:enseres@uma.es)