



Map of facilities and resources dedicated to reuse/preparation for reuse

For the purposes of this work, the following concepts are to be considered:

- **Reuse:** any operation by which products or components that are not considered waste are reused for the same purpose for which they were originally conceived.
- **Preparation for reuse:** control, cleaning and repair operations whereby products or their components that have become waste are prepared for reuse without further intensive treatment.

Territorial scope

1	Entity that completes the information	Comune di Capannori
2	City name	Capannori
3	Number of inhabitants	46.542
4	Area of the municipality (km2)	156,00
5	Urban area developed (km2)	17

What best characterizes your region?

1. Predominantly rural
2. Predominantly urban
3. Predominantly suburban
4. Other (specify):

What is the general regulatory approach to reuse and / or readiness for reuse related activities in your region?

1. Passive, there is no regulation or indirect regulation regarding reuse
2. Some indirect regulation, but without specific measures regarding reuse
3. There are regulations on reuse in place.
4. There are regulations on reuse and they are respected
5. There is a regulation on reuse, but the requirements are not always met
6. Other (specify):

Describe in more detail the regulatory situation with regard to reuse in your region (any specific legislation, regional guidelines ...)

The regulatory situation with regard to re-use in Italy is closely related to the European Environmental Policy.

The EU Directive 2008/98 formally defines the concept of re-use and preparation procedures that allow the re-use of products; Legislative Decree n.152/2006 (which approved the Environmental Consolidated Act (Code)), ratifies the content of the European standard in Italy and introduces actions and responsibilities the Ministry and local authorities must abide by.

The Code specifies those actions that allow to reuse products after checking, repairing, and cleaning them. According to the Code, the Italian Environment Ministry draft a National Waste Prevention Programme, serving as a strategic framework for waste reduction policies in Italy. The Programme includes measures to encourage people to re-use and creating systems to promote fixing and re-using objects, in particular electronic equipment, textiles and furniture.

A critical point is the lack of implementation of decrees to boost the reuse of objects/products/goods.

Local municipalities are required to propose and implement simplified measures to promote reuse and facilitate preparation for reuse. Local municipalities can identify special spaces at collection center where goods/products/objects can be temporary displayed favouring the exchange between citizens and other initiatives and allowing the widest collection of goods ready to be reused.

Door-to-door separate waste collection plays a crucial role in this system: Capannori implemented it in 2006 in collaboration with the local waste management company ASCIT – Servizi Ambientali SPA. Door-to-door separate waste collection concerns materials such as paper, plastic, metals, glass and also electronic and “bulky” equipment, including mattresses and furniture. From 2020 it will also include textiles. Tuscany is constantly updating its own Management Garbage Plan (P.R.B. 2014).

Law 166/2016 is an important tool regulating the donation and distribution of food goods for social purposes, in order to limit waste. This law allows the collection of used clothing, which can be donated instead of becoming waste.

It is a big step forward towards the European Circular Economy Plan (2021), which defines guidelines member states must abide by, such as:

- introducing rules to ban the destruction of unsold durable goods;
- simplifying the collection of electronic waste;

- distinguishing between preparation for reuse and recycling purposes;

- stressing the importance of raising awareness and educating citizens on models for the reuse of goods.

With its Regional Law n. 34/2020 - "Provisions on circular economy for waste management", Tuscany's Regional Government provides actions, guidelines and funding to promote circular economy and reuse. As for the trade of second-hand goods, the implemented rules provide registration obligations and rules concerning the Value Added Tax (VAT).

The Italian parliament is currently discussing a draft bill on the regulation of the economy of used goods and the promotion of the re-use sector.

The Municipality of Capannori, which joined the Zero Waste Strategy in 2017, has its own regulations for waste fees.

Regional activities related to reuse are mainly associated with:

1. Public authorities
2. Private companies and / or private initiatives
3. Social or charitable entities
4. Voluntary initiatives
5. Other (specify):

As part of the overall management of waste, are government financial aid options available for its reuse and / or preparation for reuse activities?

1. Absence of government financial aid to support activities related to reuse
2. There are limited measures of direct / indirect financial support
3. There are some direct / indirect financial support measures but nothing significant
4. There are many direct / indirect financial support measures, but nothing significant
5. There are some important measures of direct / indirect financial support
6. There are many important measures of direct / indirect financial support
7. Other (specify):

Describe in more detail the financial situation in your region as much as reusing or preparing for reuse concerns (any specific financial support programs, benefits ...)

The Municipality of Capannori, through its Tariff, implements a reducing waste policy and favours and rewards *the door-to-door separate waste collection*.

The punctual tariff system provides that citizens can benefit from discount in several situations:

- having a domestic composter (-about 30% on the variable tax)
- joining the “ Zero Waste Families” project (specific project to reduce garbage encouraging reuse)
- selling bulk products (such as soap, detergent...) (from 10% to 50% depending on the surface used for bulk products)

According to the Law 166/2016 sellers who donate their products, damaged or close to their expiration date, may benefit of tariff reductions (ex art.23 bis).

In recent years, the Municipality of Capannori promoted (and financed) a civic crowdfunding campaign to encourage start-ups focusing on reusing and circular economy: projects such as “Lillero” and “Conserve” are the best practice launched thanks to this campaign.

During the lockdown, the Municipality of Capannori favoured and supported a reuse project for repairing and reusing old personal computers, in order to donate them to local schools and their students.

Is there a website or mobile application that facilitates the purchase-sale, donation, loan or exchange of products?

Designation	Activity (1,2,3,4)*	Scope (I,N,R,L)**
Togoodtogo App	1	I
Felicittà App	2	L
Last minute sottocasa App	1	N
Fame zero http://www.zerosprechi.net/fame-zero/	2	I
Breeding App	2	N/L
Ratatouille App	--	N
MYFOOD.it	1	N
No.W- https://thinkabout.srl/chi-siamo	1	I
www.mercatinolibri.org	1	N
Www.senzaspreco.it	1-2	N
Www.Subito.it	1	N
Www.Svuotaly.it	1	N
Rebelle APP	1	I
Www.E-BAY.it	1	N
https://www.vinted.it/	1	I
Www.nonsprecare.it		N
Www.Pickmybook.com	1	N
Pickmybook (app)	1	N
Lillero App	4	L
Www.swappy.com (Iphone)	1	N

Www.Refurbed.it	1	I
Www.toorna.it	2-3-4	N

* 1 Buy and sell. 2 Donation. 3 Loan. 4 Exchange

** I=International, N=National, R=Regional, L=Local



LIST OF REUSE / PREPARATION FOR REUSE ENTITIES

Entity's designation

COMITATO RIONALE SANTA CATERINA – RIUSAMI E SCAMBIAMI (MERCATO DEL RIUSO)

ADDRESS

Street	Number	Postal code	City
PIAZZA DEL MERCATO, MARLIA		55014	LUCCA
Telephones	3476511244		
Website	www.rionesantacaterina.com		
Social Networks	FACEBOOK: Comitato Rionale Santa Caterina		

GPS LOCALIZATION

<https://goo.gl/maps/MH2d88GwMAeypXex9>

Latitude N-S (DD)	Longitude E-O (DD)
43.88744232004889	10.5534251

Area in m2	2000
------------	------

TYPE OF ENTITY (mark with X the choices)

Public	Municipal	Regional	National	International
Non-profit NGO	Religious	Secular		
		X		
Private commercial				
Others, specify				



REUSEMED

Volume of activity	year			2019	quantity	
	Invoicing (€)				kg	Units
Activity	Sales	Rental	Loan	Exchange		
Books	X			X		200
Clothes	X			X		500
Small appliances	X			X		20
Large appliances						
Tools	X			X		10
Furniture and household items	X			X		300
Others (specify)						
YEAR TOTAL						

MAP OF REUSE RESOURCES





LIST OF REUSE / PREPARATION FOR REUSE ENTITIES

Entity's designation

CONSERVE – IL RECUPERO DELL'ECCEDEZZA AGRICOLA

ADDRESS

Street	Number	Postal code	City
Via stradone di Camigliano (Capannori)	302	55012	Lucca
Telephones	+393349972455		
Website	www.conservelucca.it		
Social Networks	FACEBOOK: Conservelucca		

GPS LOCALIZATION

<https://goo.gl/maps/Pry68V8DLFWquVtW7>

Latitude N-S (DD)	Longitude E-O (DD)
43.88313597218582	10.602216455180217

Area in m2

TYPE OF ENTITY (mark with X the choices)

Public	Municipal	Regional	National	International
Non-profit NGO	Religious	Secular		
		X		
Private commercial				
Others, specify				



REUSEMED

Volume of activity	year				quantity	
	Invoicing (€)					
	Sales	Rental	Loan	Exchange	kg	Units
Books						
Clothes						
Small appliances						
Large appliances						
Tools						
Furniture and household items						
Others (FOOD)	X				1730	
YEAR TOTAL						

MAP OF REUSE RESOURCES





LIST OF REUSE / PREPARATION FOR REUSE ENTITIES

Entity's designation

CENTRO DI RIUSO DACCAPO

ADDRESS

Street	Number	Postal code	City
VIA STIPETI (CAPANNORI)	31	55012	LUCCA
Telephones	0039 - 3337828837		
Website	www.daccaporiuso.it		
Social Networks	FACEBOOK: Daccapo Sistema di Riuso Solidale		

GPS LOCALIZATION

<https://goo.gl/maps/srX5hdNnbz1RAfWq7>

Latitude N-S (DD)	Longitude E-O (DD)
43.80914180925876	10.495017780614134

Area in m2	1750
------------	-------------

TYPE OF ENTITY (mark with X the choices)

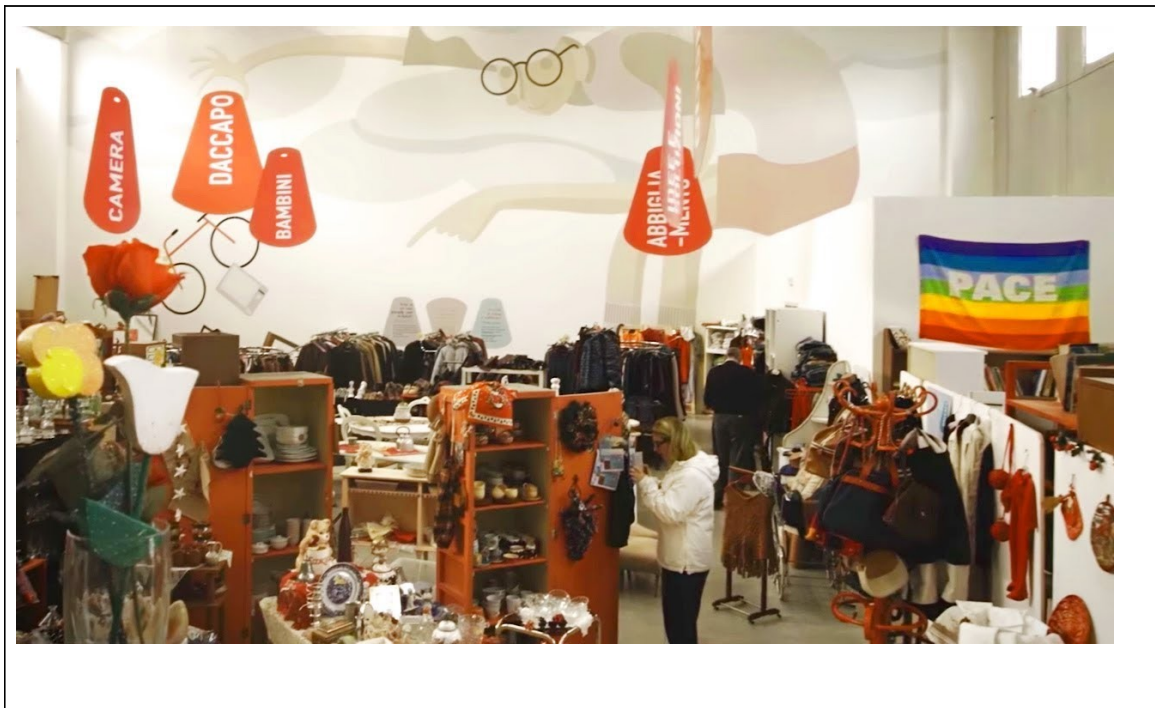
Public	Municipal	Regional	National	International
Non-profit NGO	Religious	Secular		
		X		
Private commercial				
Others, specify				



REUSEMED

Volume of activity	year				2020		quantity	
	Invoicing (€)							
Activity	Sales	Rental	Loan	Exchange	kg	Units		
Books	X			X				
Clothes	X			X	28.000			
Small appliances	X			X				
Large appliances	X			X				
Tools	X			X				
Furniture and household items	X			X	35.000			
Others (WOOD)	X				4.000			
Others (piece of bicycle)	X			X	2.100			
YEAR TOTAL								

MAP OF REUSE RESOURCES





LIST OF REUSE / PREPARATION FOR REUSE ENTITIES

Entity's designation

FUNGHI ESPRESSO - AZIENDA AGRICOLA CIRCULAR FARM

ADDRESS

Street	Number	Postal code	City
VIA DI TRIOZZI	31/A	50018	SCANDICCI (FIRENZE)*
Telephones	3515290725		
Website Social Networks	www.funghiespresso.com www.circularfarm.it		

GPS LOCALIZATION

<https://goo.gl/maps/vz5vhLeHxo2XpQQL7>

Latitude N-S (DD)	Longitude E-O (DD)
43.746316593838834	11.17261525572193

Area in m2	1500
------------	------

* The project is born in Capannori

TYPE OF ENTITY (mark with X the choices)

Public	Municipal	Regional	National	International
	<input type="checkbox"/>	<input type="checkbox"/>	<input type="checkbox"/>	<input type="checkbox"/>
Non-profit NGO	Religious	Secular		
	<input type="checkbox"/>	<input type="checkbox"/>		
Private commercial	X			



REUSEMED

Others, specify

Volume of activity	year				2020	
	Invoicing (€)				/	
Activity	Sales	Rental	Loan	Exchange	kg	Units
Books						
Clothes						
Small appliances						
Large appliances						
Tools						
Furniture and household items						
Others (COFFEE GROUNDS)	X				15000	
YEAR TOTAL						

MAP OF REUSE RESOURCES







LIST OF REUSE / PREPARATION FOR REUSE ENTITIES

Entity's designation

GROSSOMODO, BI-DONE

ADDRESS

Street	Number	Postal code	City
Foro Boario SP1		55100	Lucca, Toscana
Telephones	3298210137- 340 1404716		
Website Social Networks	Mail: bidone.crc@gmail.com Fb: Bi-done, grossomodocentrariuso instagram bi_done		

GPS LOCALIZATION

Latitude N-S (DD)	Longitude E-O (DD)
43.85664057580324	10.508685631076284

Area in m2	70
------------	----

TYPE OF ENTITY (mark with X the choices)

Public	Municipal	Regional	Nati onal	International
Non-profit NGO non-profit association		Secular		
Private commercial				
Others, specify	GROSSOMODO, it is an experience born in 2017 with the idea of animating a "reuse center"			



REUSEMED

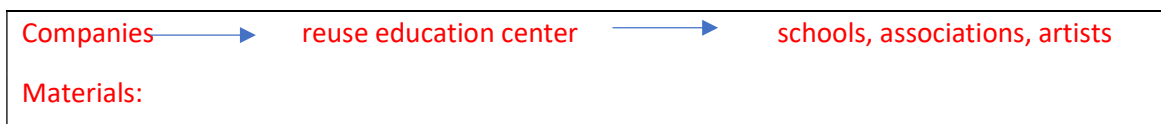
whose purpose is the organization of a Reuse Supply Chain". The space is managed by a partnership table consisting of:

- Bidone, lead association
- Ass. Ascolta la mia voce
- Quindi
- Caritas Lucca
- Immagina

Volume of activity	year			2020	quantity	
	Invoicing (€)			1000 *		
Activity	Sales	Rental	Loan	Exchange	kg	Units
Books						
Clothes						
Small appliances						
Large appliances						
Tools						
Furniture and household items						
Others (specify) waste materials from companies, production scraps, production surplus donated					5000	
YEAR TOTAL				1000	5000	

* contribution from the membership cards

MAP OF REUSE RESOURCES





REUSEMED



Center



Laboratorie





REUSEMED



Companies:

Eurointrecci, Drope, Olivart, New Clanto, Ciompi, GLT srl, Nuovo scatolificio Lucchese, Beste Mariplast, Catelli filati, Nivel, Lucca Vetro, Frantoio sociale del compitese, La stamperia, Papeschi, Bartoli, Grafica 77, Italfama ; Filippo Bardazzi, Bonturi



LIST OF REUSE / PREPARATION FOR REUSE ENTITIES

Entity's designation

HACKING LABS – CENTRO DEL RIUSO DELLE APPARECCHIATURE ELETTRONICHE

ADDRESS

Street	Number	Postal code	City
Via Piaggiori Basso (Segromigno In Monte)	8	55012	(Lucca)
Telephones	(0039) 0583 -961015		
Website	www.hackinglabs.it		
Social Networks	FACEBOOK: Associazione hacking labs		

GPS LOCALIZATION

<https://goo.gl/maps/UKP5xroySuFttsnd7>

Latitude N-S (DD)	Longitude E-O (DD)
43.88599669419376	10.595082326344281

Area in m2	300
------------	-----

TYPE OF ENTITY (mark with X the choices)

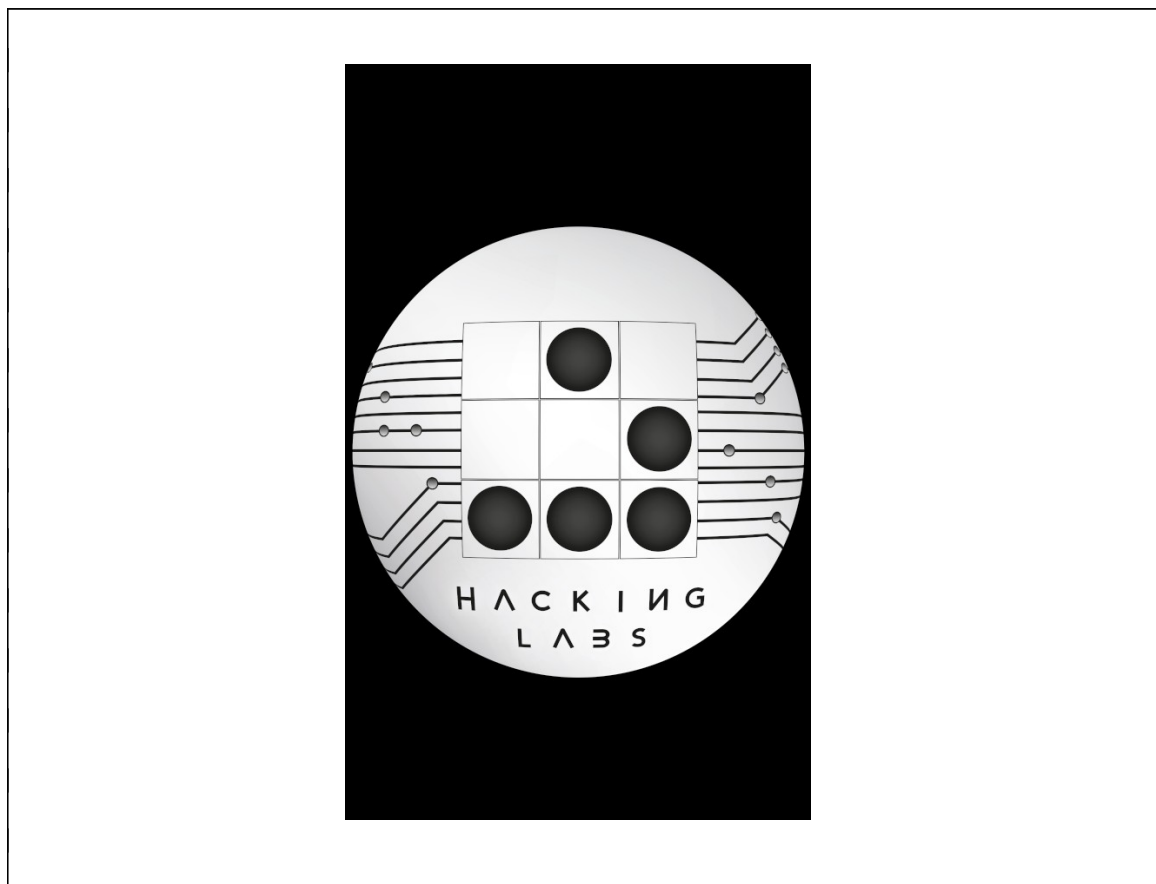
Public	Municipal	Regional	National	International
Non-profit NGO	Religious	Secular		
		X		
Private commercial				
Others, specify				



REUSEMED

Volume of activity	year				2020		quantity
	Invoicing (€)				5000 €		
Activity	Sales	Rental	Loan	Exchange	kg	Units	
Books							
Clothes							
Small appliances	X			X		650	
Large appliances							
Tools							
Furniture and household items							
Others (specify)							
YEAR TOTAL							

MAP OF REUSE RESOURCES





LIST OF REUSE / PREPARATION FOR REUSE ENTITIES

Entity's designation

LILLERO – IL VERO MERCATO DEL BARATTO

ADDRESS

Street	Number	Postal code	City
Via traversa di Parezzana (Capannori)	1	55012	Lucca
Telephones	348 259 8664		
Website Social Networks	FACEBOOK E INSTAGRAM: Lillero - il vero mercato del baratto		

GPS LOCALIZATION

<https://goo.gl/maps/dyUHwxb5jxKANfNN8>

Latitude N-S (DD)	Longitude E-O (DD)
43.8242577632641	10.542381235930552

Area in m2	200 mq
------------	--------

TYPE OF ENTITY (mark with X the choices)

Public	Municipal	Regional	National	International
Non-profit NGO	Religious	Secular		
		X		
Private commercial				
Others, specify				



REUSEMED

Volume of activity	year				2020	quantity	
	Invoicing (€)				1500 €		
Activity	Sales	Rental	Loan	Exchange	kg	Units	
Books				X		1500	
Clothes				X			
Small appliances				X		70	
Large appliances							
Tools				X		200	
Furniture and household items				X		200	
Others (giochi per bambini)				X		500	
YEAR TOTAL						2470	

MAP OF REUSE RESOURCES





LIST OF REUSE / PREPARATION FOR REUSE ENTITIES

Entity's designation

Mercatino dei libri usati

ADDRESS

Street	Number	Postal code	City
Via del Brennero	673	55100	Lucca
Telephones	customercare@mercatinolibri.org (only email)		
Website Social Networks	http://www.mercatinolibri.org/		

GPS LOCALIZATION

<https://goo.gl/maps/NHxSN8RPv895zp8s8>

Latitude N-S (DD)	Longitude E-O (DD)
43.857862361784015	10.512766828715407

Area in m2	50 mq
------------	-------

TYPE OF ENTITY (mark with X the choices)

Public	Municipal	Regional	National	International
Non-profit NGO	Religious	Secular		
		X		
Private commercial				
Others, specify				



REUSEMED

Volume of activity	year				2020	quantity	
	Invoicing (€)				0		
Activity	Sales	Rental	Loan	Exchange	kg	Units	
Books				X	2910	5000	
Clothes							
Small appliances							
Large appliances							
Tools							
Furniture and household items							
Others (specify)							
YEAR TOTAL				0			

MAP OF REUSE RESOURCES





LIST OF REUSE / PREPARATION FOR REUSE ENTITIES

Entity's designation

Paideia insieme per l'educazione

ADDRESS

Street	Number	Postal code	City
Via Paolinelli	84		Capannori
Telephones			
Website Social Networks	FB https://www.facebook.com/AssociazionePaideia Capannori		

GPS LOCALIZATION

Latitude N-S (DD)	Longitude E-O (DD)

Area in m2	o*
------------	----

* the association is looking for a new place

TYPE OF ENTITY (mark with X the choices)

Public	Municipal	Regional	National	International
Non-profit NGO	Religious	Secular		
		X		
Private commercial				
Others, specify				



Volume of activity	year				quantity	
	Invoicing (€)					
Activity	Sales	Rental	Loan	Exchange/ donation	kg	Units
Books					500	
Clothes					900	
Small appliances						
Large appliances						
Tools						
Furniture and household items						
Others baby items (stroller, sun bed, cots...)						600
YEAR TOTAL						

MAP OF REUSE RESOURCES





LIST OF REUSE / PREPARATION FOR REUSE ENTITIES

Entity's designation

SARTORIA QUINDI (COOPERATIVA NANINA)

ADDRESS

Street	Number	Postal code	City
VIA STIPETI (CAPANNORI)	31	55012	LUCCA
Telephones	0039 3478208388		
Website	www.nanina.lu.it		
Social Networks	FACEBOOK: Quindi		

GPS LOCALIZATION

<https://goo.gl/maps/srX5hdNnbz1RAfWq7>

Latitude N-S (DD)	Longitude E-O (DD)
43.80914180925876	10.495017780614134

Area in m2	100
------------	-----

TYPE OF ENTITY (mark with X the choices)

Public	Municipal	Regional	National	International
Non-profit NGO	Religious	Secular		
		X		
Private commercial				
Others, specify				



REUSEMED

Volume of activity	year				2020		quantity
	Invoicing (€)			Not available	kg	Units	
Activity	Sales	Rental	Loan	Exchange			
Books							
Clothes							
Small appliances							
Large appliances							
Tools							
Furniture and household items							
Others (FABRIC AND LEATHER)	X					700	
YEAR TOTAL							

MAP OF REUSE RESOURCES





LIST OF REUSE / PREPARATION FOR REUSE ENTITIES

Entity's designation

R3DIRECT di Stefano Giovacchini e C.

ADDRESS

Street	Number	Postal code	City
Via di belvedere 10		55012	Capannori
Telephones	3483008578		
Website Social Networks	Www.r3direct.it FB R3direct		

GPS LOCALIZATION

Latitude N-S (DD)	Longitude E-O (DD)
43.877798	10.62524

Area in m2 (operating center)	150
--------------------------------	-----

TYPE OF ENTITY (mark with X the choices)

Public	Municipal	Regional	National	International
Non-profit NGO	Religious	Secular		
Private commercial			X	
Others, specify				



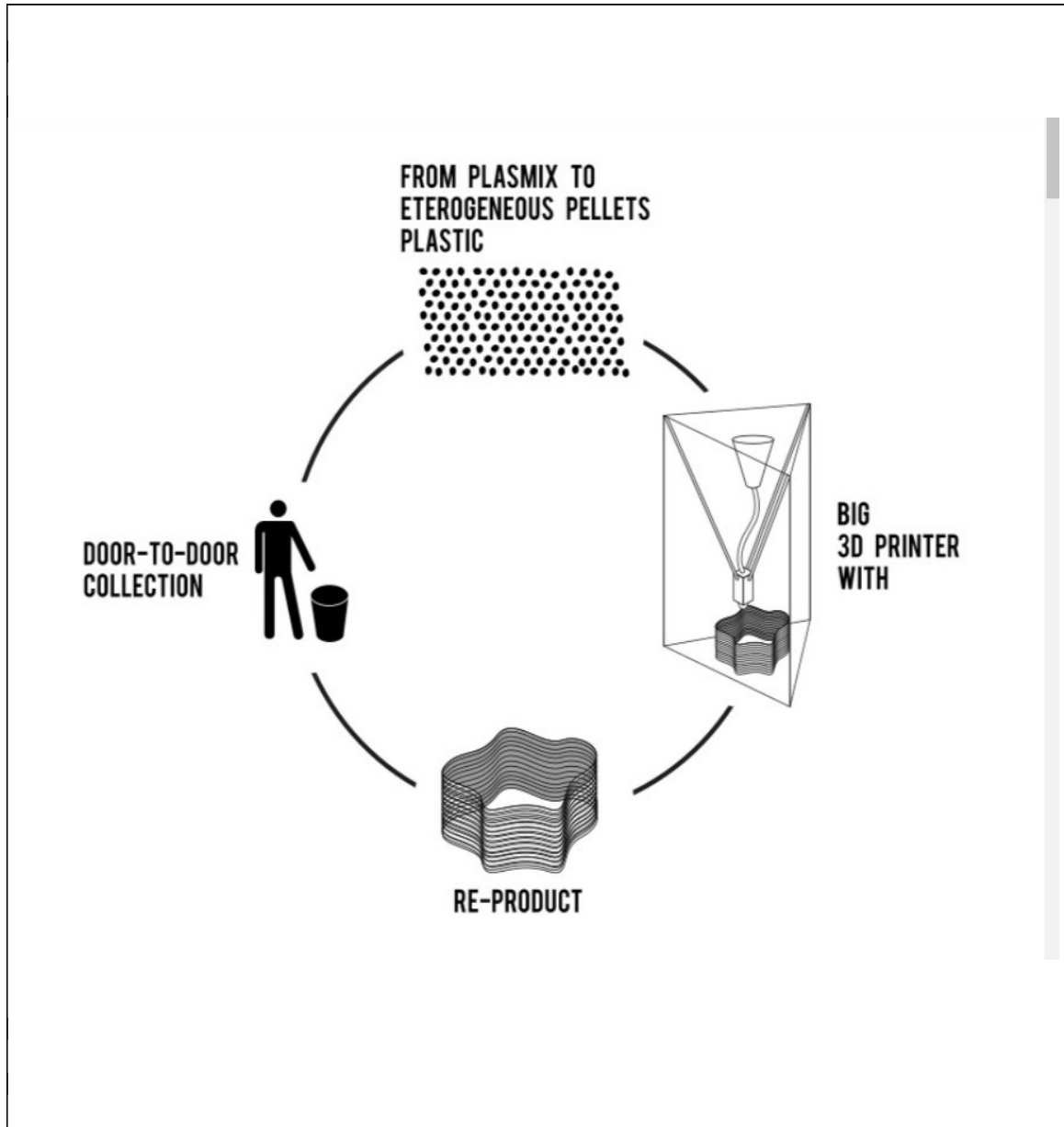
REUSEMED

Volume of activity	year				2020		quantity	
	Invoicing (€)				50.000			
Activity	Sales	Rental	Loan	Exchange	kg	Units		
Books								
Clothes								
Small appliances								
Large appliances								
Tools								
Furniture and household items								
Others (specify) plastic materials	X					600		
YEAR TOTAL								

MAP OF REUSE RESOURCES



 **REUSEMED**





LIST OF REUSE / PREPARATION FOR REUSE ENTITIES

Entity's designation

TERRA DI TUTTI SRL IMPRESA SOCIALE

ADDRESS

Street	Number	Postal code	City
Via di Piaggiori Basso (Segromigno in Monte)	85	55012	Lucca
Telephones	3208841519		
Website	www.terraditutti.it		
Social Networks	INSTAGRAM E FACEBOOK: Terra di Tutti		

GPS LOCALIZATION

<https://goo.gl/maps/g8TtaPiEdUVHcbYP8>

Latitude N-S (DD)	Longitude E-O (DD)
43.88511002725294	10.598535455180297

Area in m2	175 mq
------------	--------

TYPE OF ENTITY (mark with X the choices)

Public	Municipal	Regional	National	International
Non-profit NGO	Religious	Secular		
		X		
Private commercial				
Others, specify				



REUSEMED

Volume of activity	year				2020		quantity
	Invoicing (€)						
Activity	Sales	Rental	Loan	Exchange	kg	Units	
Books							
Clothes							
Small appliances							
Large appliances							
Tools							
Furniture	X					30	
Others (TAILORING)	X					7000	
Others (STATIONERY)						1000	
YEAR TOTAL							

MAP OF REUSE RESOURCES





Map of facilities and resources dedicated to reuse/preparation for reuse

--

LIST OF REUSE / PREPARATION FOR REUSE ENTITIES

***Repeat this page for every different entity**

Entity's designation

Pane quotidiano Onlus for "BOTTEGA 5 PANI" project
--

ADDRESS

Street	Number	Postal code	City
Via della Chiesa 47 Massa Macinaia	47	55060	Capannori
Telephones	320-1751852		
Website			
Social Networks	no		

GPS LOCALIZATION

Latitude N-S (DD)	Longitude E-O (DD)
4380027	10.551.27

Area in m2	50
------------	----

TYPE OF ENTITY (mark with X the choices)

Public	Municipal	Regional	National	International
Non-profit NGO	Religious	Secular		
	X			



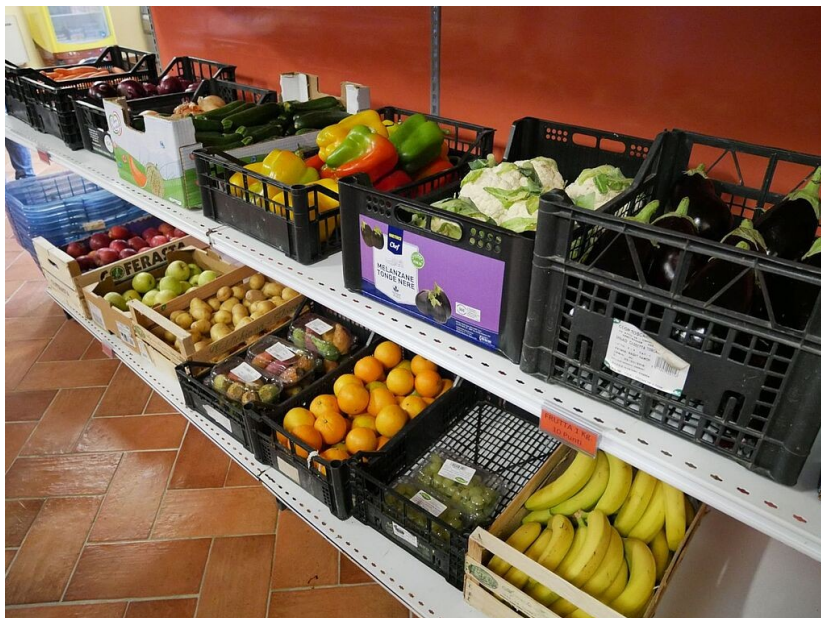
Private commercial	-	
Others, specify		

Volume of activity	year			2020	quantity	
	Invoicing (€)			16.000*		
Activity	Sales	Rental	Loan	Exchange/ Donation	kg	Units
Books						
Clothes						
Small appliances						
Large appliances						
Tools						
Furniture and household items						
Others (FOOD: fresh and packaged food				X	Not available	70**
YEAR TOTAL						

* contribution of the Municipality.

** families assisted that shopping (no paying) at the shop

MAP OF REUSE RESOURCES





LIST OF REUSE / PREPARATION FOR REUSE ENTITIES

Entity's designation

Alida Bondanelli

ADDRESS

Street	Number	Postal code	City
Via di san Ginese	266		
Telephones	3473724772		
Website Social Networks	Www.locandasanginese.com		

GPS LOCALIZATION

Latitude N-S (DD)	Longitude E-O (DD)
4379300	1058890

Area in m2	40
------------	----

TYPE OF ENTITY (mark with X the choices)

Public	Municipal	Regional	National	International
Non-profit NGO	Religious	Secular		
Private commercial				
Others, specify	Private citizen			



REUSEMED

Volume of activity	year				quantity	
	Invoicing (€)					
Activity	Sales	Rental	Loan	Exchange	kg	Units
Books				X	10	
Clothes				X	60	
Small appliances						
Large appliances						
Tools						
Furniture and household items						
Others (Childcare articals)				X	130	
YEAR TOTAL						

MAP OF REUSE RESOURCES





Map of facilities and resources dedicated to reuse/preparation for reuse

For the purposes of this work, the following concepts are to be considered:

- **Reuse:** any operation by which products or components that are not considered waste are reused for the same purpose for which they were originally conceived.
- **Preparation for reuse:** control, cleaning and repair operations whereby products or their components that have become waste are prepared for reuse without further intensive treatment.

Territorial scope

1	Entity that completes the information	Sadeco
2	City name	Cordoba
3	Number of inhabitants	326,039 inhabitants
4	Area of the municipality (km ²)	1,254.31 km ²
5	Urban area developed (km ²)	

What best characterizes your region?

1. Predominantly rural
2. Predominantly urban
3. Predominantly suburban
4. Other (specify): Predominantly urban with surrounding rural areas.

What is the general regulatory approach to reuse and / or readiness for reuse related activities in your region?

1. Passive, there is no regulation or indirect regulation regarding reuse
- 2. Some indirect regulation, but without specific measures regarding reuse**
3. There are regulations on reuse in place.
4. There are regulations on reuse and they are respected
5. There is a regulation on reuse, but the requirements are not always met
6. Other (specify):



Describe in more detail the regulatory situation with regard to reuse in your region (any specific legislation, regional guidelines ...)

There is some indirect regulation, but without specific measures on reuse.

Regional activities related to reuse are mainly associated with:

1. Public authorities
2. Private companies and / or private initiatives
- 3. Social or charitable entities**
4. Voluntary initiatives
5. Other (specify):

As part of the overall management of waste, are government financial aid options available for its reuse and / or preparation for reuse activities?

1. Absence of government financial aid to support activities related to reuse

2. There are limited measures of direct / indirect financial support
3. There are some direct / indirect financial support measures but nothing significant
4. There are many direct / indirect financial support measures, but nothing significant
5. There are some important measures of direct / indirect financial support
6. There are many important measures of direct / indirect financial support
7. Other (specify):

Describe in more detail the financial situation in your region as much as reusing or preparing for reuse concerns (any specific financial support programs, benefits ...)

Programs of financial support to the actions don't exist



Is there a website or mobile application that facilitates the purchase-sale, donation, loan or exchange of products?

Designation	Activity (1,2,3,4)*	Scope (I,N,R,L)**
App Vinted	1	I
App Wallapop	1	N
www.ofrezcoacambio.com	4	N
www.haztruequing.com	4	N
http://es.bookmooch.com/	4	I
https://bancodetiempocordoba.wordpress.com	4	L

* 1 Buy and sell. 2 Donation. 3 Loan. 4 Exchange

** I=International, N=National, R=Regional, L=Local



Entity's designation
ASOCIACION RETO

ADDRESS

Street	Number	Postal code	City
Ctra. Palma del Rio	KM 6.5	14005	Córdoba
Gran vía Parque	16	14005	Córdoba
El Almendro 9	9	14006	Córdoba
Telephones	957329324, 957329329, 671090028		
Website	https://centroretocordoba.es/		
Social Networks	https://www.facebook.com/rastroretobarcelona		

GPS LOCALIZATION

Latitude N-S (DD)	Longitude E-O (DD)
37.87695759464443	-4.855219027845303
37.88166331489476,	-4.793155031171969
37.89652878840139,	-4.7824581769310175
8769575946444337	-4.855219027845303

Area in m2	1200; 300; 90
------------	---------------

TYPE OF ENTITY (mark with X the choices)

Public	Municipal	Regional	National	International
Non-profit NGO	Religious	Secular		
	X			
Private commercial				
Others, specify				

Volume of activity	year				quantity	
	Invoicing (€)				kg	Units
Activity	Sales	Rental	Loan	Exchange		
Books	X					
Clothes	X					
Small appliances	X					
Large appliances	X					
Tools	X					



Furniture and household items	X					
Others (specify)						
YEAR TOTAL						

MAP OF REUSE RESOURCES





Entity's designation

BARGANERO

ADDRESS

Street	Number	Postal code	City
Imprenta de la Alborada, Polígono Industrial las Quemadas	115	14014	Córdoba
Telephones	957944115		
Website	https://mueblescosto.es		
Social Networks	https://www.facebook.com/Barganero-C%C3%B3rdoba-1710786779246159/		

GPS LOCALIZATION

Latitude N-S (DD)	Longitude E-O (DD)
37.898700039160296	-4.721620758055659

Area in m2	2500
------------	------

TYPE OF ENTITY (mark with X the choices)

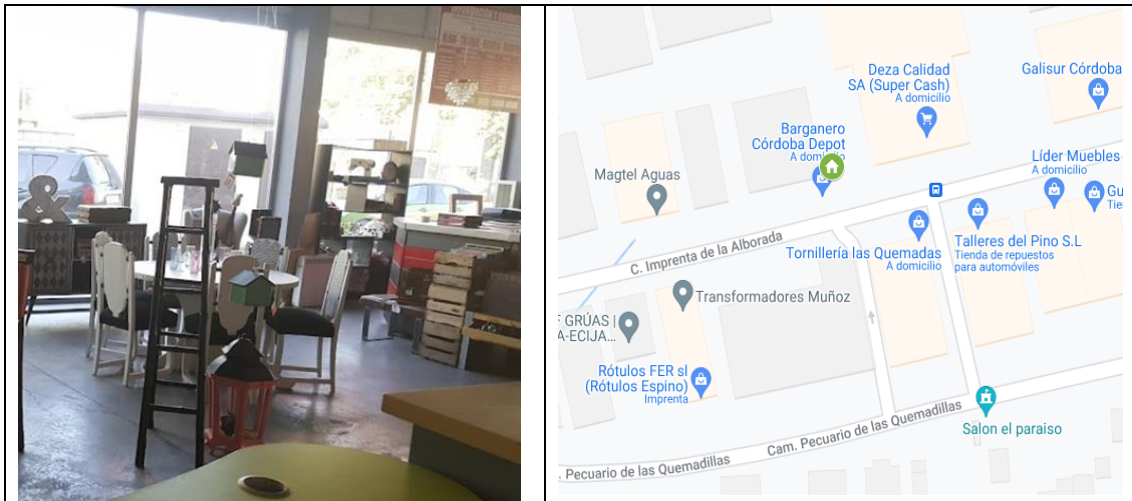
Public	Municipal	Regional	National	International
Non-profit NGO	Religious	Secular		
Private commercial	X			
Others, specify				

Volume of activity	year				quantity	
	Invoicing (€)					
Activity	Sales	Rental	Loan	Exchange	kg	Units
Books						
Clothes						
Small appliances	X					
Large appliances	X					
Tools	X					
Furniture and household items	X					
Others (specify)						
YEAR TOTAL						



REUSEMED

MAP OF REUSE RESOURCES





Entity's designation

CALIFORNIA VINTAGE

ADDRESS

Street	Number	Postal code	City
Don Lope de Sosa	44	14004	Córdoba
Telephones	665838754		
Website	https://californiavintage.es/		
Social Networks			

GPS LOCALIZATION

Latitude N-S (DD)	Longitude E-O (DD)
37.88018947625121	-4.792444915343675

Area in m2	100
------------	-----

TYPE OF ENTITY (mark with X the choices)

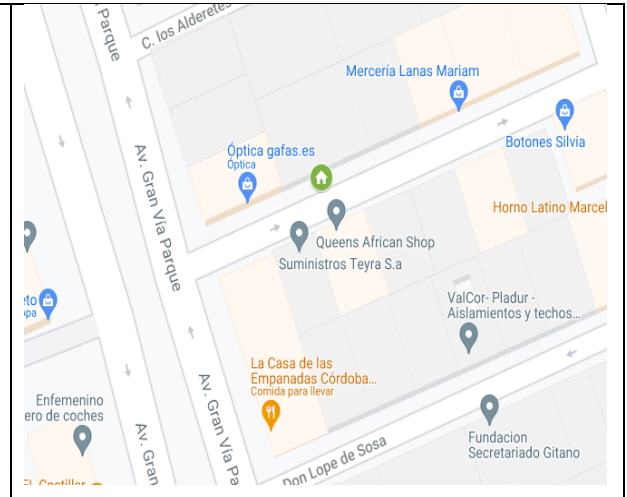
Public	Municipal	Regional	Nati onal	International
Non-profit NGO	Religious	Secular		
Private commercial	X			
Others, specify				

Volume of activity	year				quantity	
	Invoicing (€)				7.000	
Activity	Sales	Rental	Loan	Exchange	kg	Units
Books						
Clothes	X					
Small appliances						
Large appliances						
Tools						
Furniture and household items						
Others (specify)						
YEAR TOTAL						



ADDITIONAL COMMENTS:

Vintage second-hand clothes shop (Levis, Adidas, Nike, Converse, reebok, etc.)





Entity's designation

CASH CONVERTER

ADDRESS

Street	Number	Postal code	City
Calle Los Omeyas	1	14005	Córdoba
Telephones	957 23 30 18		
Website	https://cashconverters.es/tiendas/cordoba/los-omeyas/		
Social Networks	https://www.facebook.com/CashConvertersCordobaOmeya		

GPS LOCALIZATION

Latitude N-S (DD)	Longitude E-O (DD)
37.88578266976212	-4.791309359955698

Area in m2	320
------------	-----

TYPE OF ENTITY (mark with X the choices)

Public	Municipal	Regional	National	International
Non-profit NGO	Religious	Secular		
Private commercial	X			
Others, specify				

Volume of activity	year				quantity	
	Invoicing (€)				kg	Units
Activity	Sales	Rental	Loan	Exchange		
Books	X					
Clothes						
Small appliances	X					
Large appliances						
Tools	X					
Furniture and household items						
Others (specify): Vinyl records, DVD, Game	X					



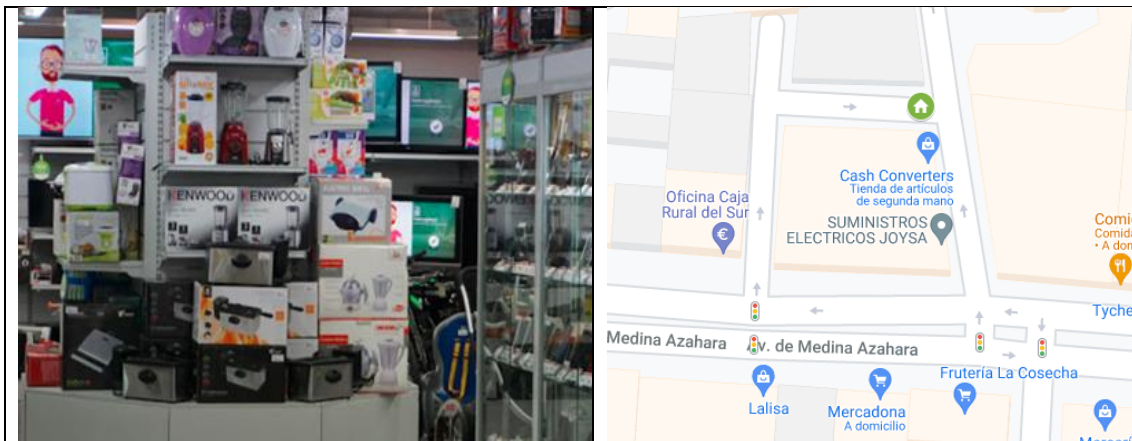
REUSEMED

YEAR TOTAL		
------------	--	--

The store opened in 2002 and it was the first shop of sales-purchase of second-hand products in Córdoba.

A wide range of second-hand items is offered. We can find books, small appliances, games, CDs or DVDs among other things.

MAP OF REUSE RESOURCES





Entity's designation

CASH PACO

ADDRESS

Street	Number	Postal code	City
Calle Ingeniero Rivera	1	14013	Córdoba
Telephones	661826050		
Website			
e-mail	maquinarias.cordoba@gmail.com		

GPS LOCALIZATION

Latitude N-S (DD)	Longitude E-O (DD)
37.845675240751945	-4.800218932922321

Area in m2	150
------------	-----

TYPE OF ENTITY (mark with X the choices)

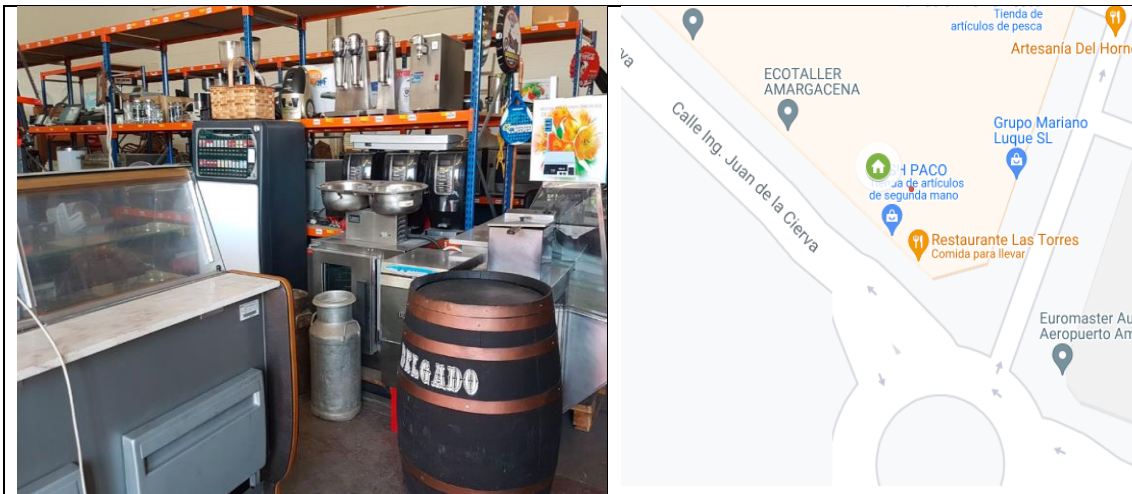
Public	Municipal	Regional	Nati onal	International
Non-profit NGO	Religious	Secular		
Private commercial	X			
Others, specify				

Volume of activity	year				quantity	
	Invoicing (€)				50.000	
Activity	Sales	Rental	Loan	Exchange	kg	Units
Books						
Clothes						
Small appliances						
Large appliances	X					
Tools	X					
Furniture and household items	X					
Others (specify): HOTELS, INDUSTRY	X					
YEAR TOTAL						



REUSEMED

MAP OF REUSE RESOURCES





Entity's designation

DISCOS VITALOGY

ADDRESS

Street	Number	Postal code	City
Calle Alfonso XIII	10	14002	Córdoba
Telephones	957117675		
Website	discos-vitalogy.myshopify.com		
Social Networks	https://www.facebook.com/discosvitalogycordoba		

GPS LOCALIZATION

Latitude N-S (DD)	Longitude E-O (DD)
37.88564805436715	-4.777177357129056

Area in m2	60
------------	----

TYPE OF ENTITY (mark with X the choices)

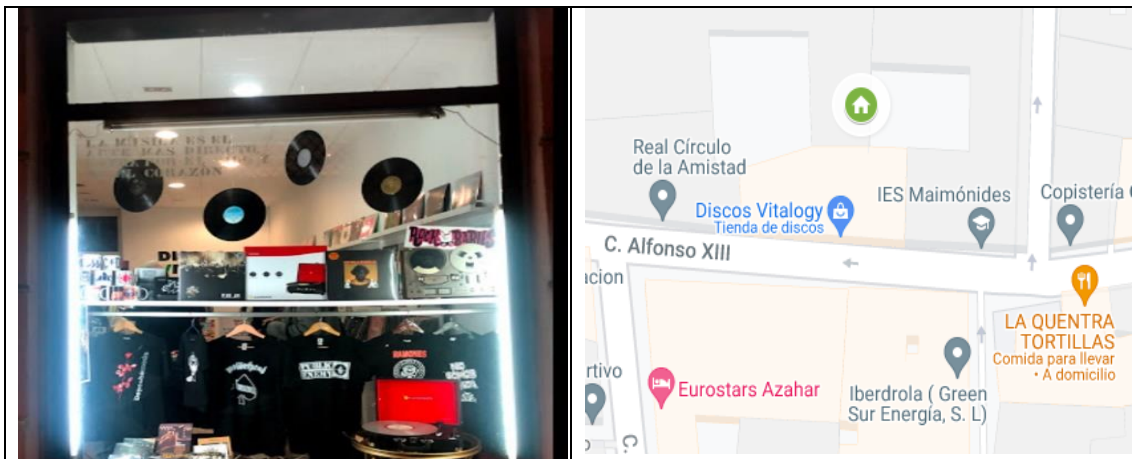
Public	Municipal	Regional	National	International
Non-profit NGO	Religious	Secular		
Private commercial	X			
Others, specify				

Volume of activity	year				quantity	
	Invoicing (€)					
Activity	Sales	Rental	Loan	Exchange	kg	Units
Books						
Clothes						
Small appliances						
Large appliances						
Tools						
Furniture and household items						
Others (specify): Vinyl records	X					
YEAR TOTAL						



REUSEMED

MAP OF REUSE RESOURCES





Entity's designation

ELECTRO-SHOCK

ADDRESS

Street	Number	Postal code	City
C/Polonia (polígono Tecno Córdoba las Quemadas)	110	14014	Córdoba
Telephones	957612072		
Website	https://electroshocks.es/		
Social Networks	https://www.facebook.com/Tusolucion10/		
E-mail	info@electroshocks.es		

GPS LOCALIZATION

Latitude N-S (DD)	Longitude E-O (DD)
37.897552437146174	-4.7312494869010795
Area in m2	600

TYPE OF ENTITY (mark with X the choices)

Public	Municipal	Regional	National	International
Non-profit NGO	Religious	Secular		
Private commercial	X			
Others, specify				

Volume of activity	year				quantity	
	Invoicing (€)				kg	Units
Activity	Sales	Rental	Loan	Exchange		
Books						
Clothes						
Small appliances	X					
Large appliances	X					
Tools						
Furniture and household items						
Others (specify):						
YEAR TOTAL						



REUSEMED

MAP OF REUSE RESOURCES





Entity's designation

EL TRASTERO DE REGINALD

ADDRESS

Street	Number	Postal code	City
Calle Ingeniero Juan de la Cierva	1	14013	Córdoba
Telephones	957429504; 686242173		
Website	http://www.eltrasterodereginaldperry.com/		
Social Networks	https://www.facebook.com/El-Trastero-de-Reginald-Perry-280766725750008		

GPS LOCALIZATION

Latitude N-S (DD)	Longitude E-O (DD)
37.8576360089611	-4.789496686892653

Area in m2	200
------------	-----

TYPE OF ENTITY (mark with X the choices)

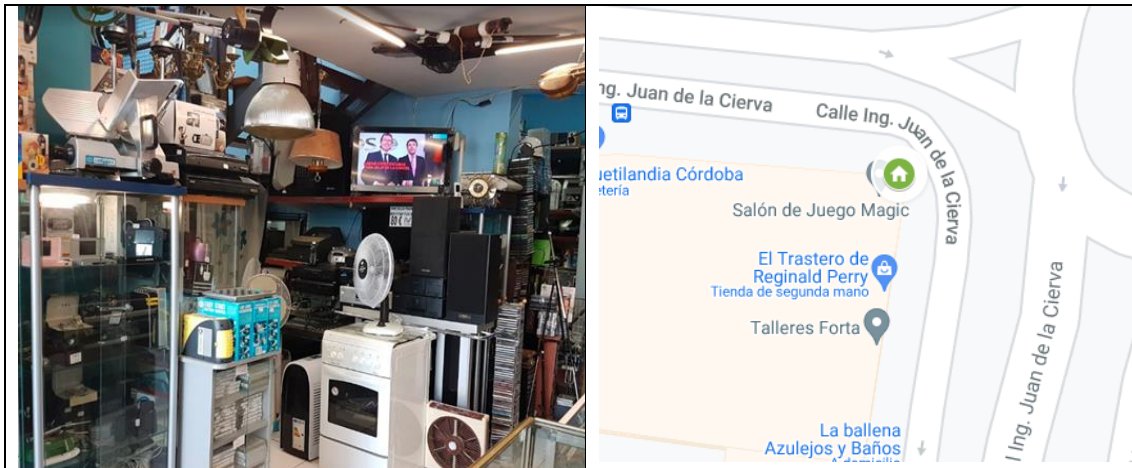
Public	Municipal	Regional	National	International
	<input type="checkbox"/>	<input type="checkbox"/>	<input type="checkbox"/>	<input type="checkbox"/>
Non-profit NGO	Religious	Secular		
	<input type="checkbox"/>	<input type="checkbox"/>		
Private commercial	X			
Others, specify				

Volume of activity	year				quantity	
	Invoicing (€)				kg	Units
Activity	Sales	Rental	Loan	Exchange		
Books						
Clothes						
Small appliances	X					
Large appliances	X					
Tools						
Furniture and household items						
Others (specify): DVDs, CDs	X					
YEAR TOTAL						



REUSEMED

MAP OF REUSE RESOURCES





Entity's designation

HIPER RASTRO REMAR CÓRDOBA

ADDRESS

Street	Number	Postal code	City
Avenida Profesor Arnold J. Toynbee	24	14007	Córdoba
Telephones	957405532		
Website	https://remar.org/		
Social Networks	https://www.facebook.com/hiperrastro.remarcordoba		
	https://www.instagram.com/remarespana/?hl=es		
	https://twitter.com/ongremar		

GPS LOCALIZATION

Latitude N-S (DD)	Longitude E-O (DD)
37.902440610733706	-4.770448109773136

Area in m2	600
------------	-----

TYPE OF ENTITY (mark with X the choices)

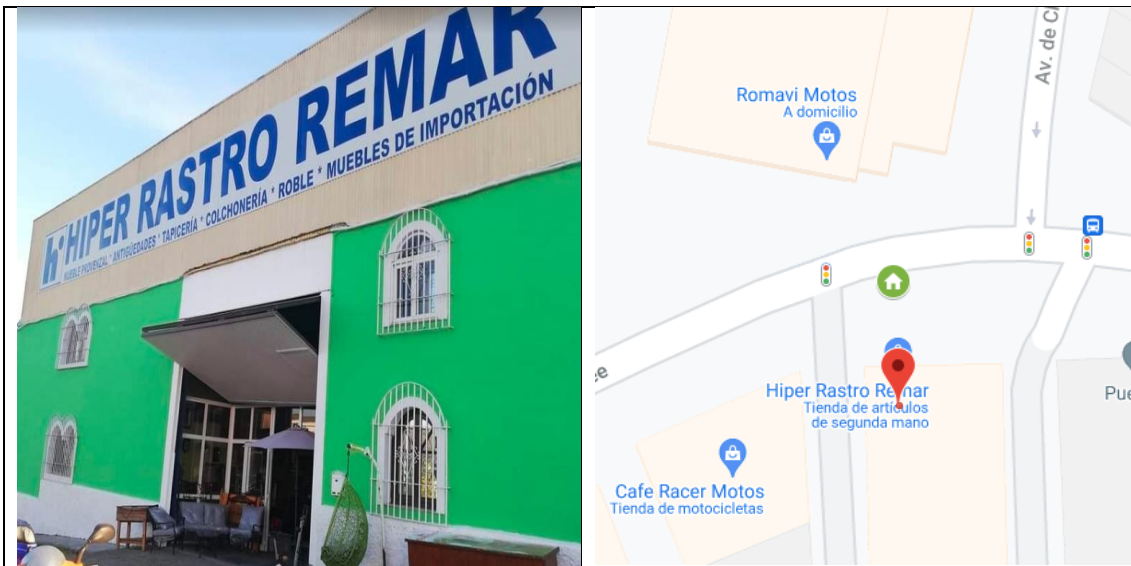
Public	Municipal	Regional	National	International
Non-profit NGO	Religious	Secular		
	X			
Private commercial				
Others, specify				

Volume of activity	year				quantity	
	Invoicing (€)				kg	Units
Activity	Sales	Rental	Loan	Exchange		
Books	X					
Clothes	X					
Small appliances	X					
Large appliances	X					
Tools	X					
Furniture and household items	X					



Others (specify):						
YEAR TOTAL						

MAP OF REUSE RESOURCES





Entity's designation

KETVENDO

ADDRESS

Street	Number	Postal code	City
La Golondrina polig. de quintos parc 4b	Nave 3	14005	Córdoba
Telephones	626372341		
Website			
Social Networks			

GPS LOCALIZATION

Latitude N-S (DD)	Longitude E-O (DD)
37.85121292593793	-4.862098331071709

Area in m2	600
------------	-----

TYPE OF ENTITY (mark with X the choices)

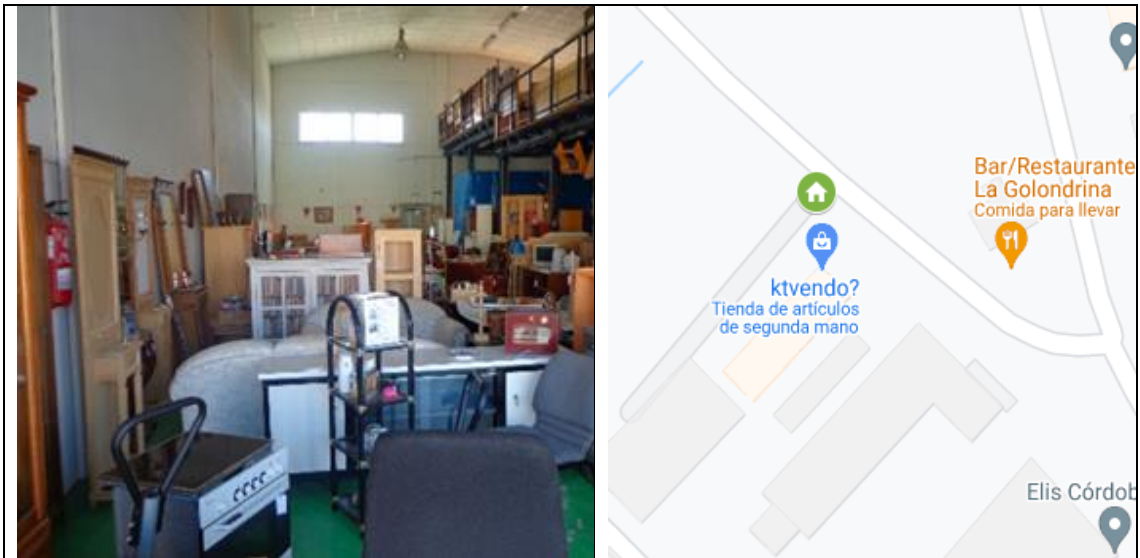
Public	Municipal	Regional	National	International
Non-profit NGO	Religious	Secular		
Private commercial	X			
Others, specify				

Volume of activity	year				quantity	
	Invoicing (€)				kg	Units
Activity	Sales	Rental	Loan	Exchange		
Books						
Clothes						
Small appliances	X					
Large appliances	X					
Tools	X					
Furniture and household items	X					
Others (specify):						
YEAR TOTAL						



REUSEMED

MAP OF REUSE RESOURCES





Entity's designation

LA BUHARDILLA

ADDRESS

Street	Number	Postal code	City
Calle Motril	53	14013	Córdoba
Telephones	857800230; 640 39 44 53		
Website			
Social Networks	https://www.facebook.com/articulosusadoslabuhardilla		

GPS LOCALIZATION

Latitude N-S (DD)	Longitude E-O (DD)
37.86365612597001	-4.7770627681382365

Area in m2	70
------------	----

TYPE OF ENTITY (mark with X the choices)

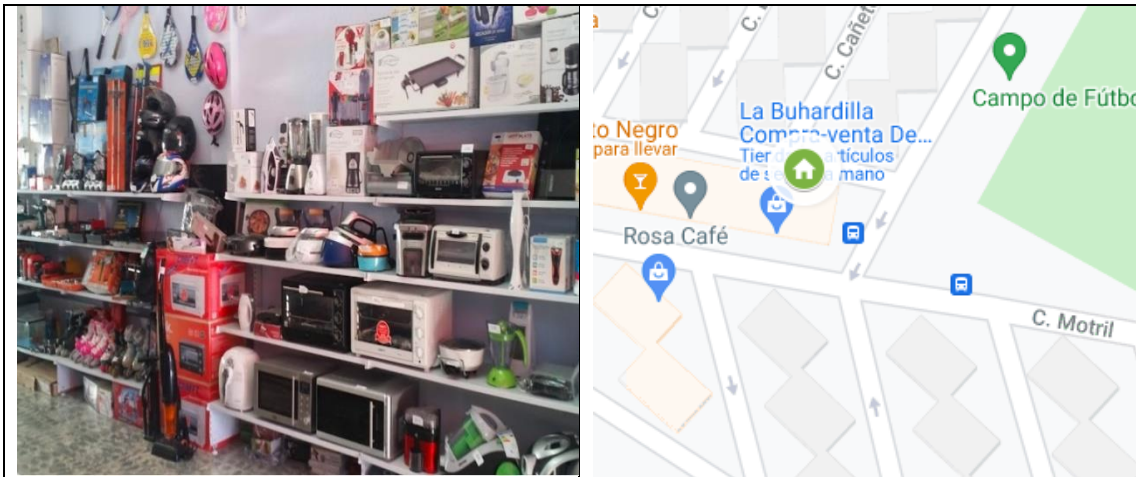
Public	Municipal	Regional	National	International
Non-profit NGO	Religious	Secular		
Private commercial	X			
Others, specify				

Volume of activity	year				quantity	
	Invoicing (€)					
Activity	Sales	Rental	Loan	Exchange	kg	Units
Books						
Clothes	X					
Small appliances	X					
Large appliances						
Tools	X					
Furniture and household items	X					
Others (specify):						
YEAR TOTAL						



REUSEMED

MAP OF REUSE RESOURCES





Entity's designation

LA CICLETA

ADDRESS

Street	Number	Postal code	City
Avenida Aeropuerto	7	14004	Córdoba
Telephones	957 08 38 76		
Website	https://la-cicleta.negocio.site/		
Social Networks	https://www.facebook.com/LaCicleta		

GPS LOCALIZATION

Latitude N-S (DD)	Longitude E-O (DD)
37.87882958481109	-4.790213042596724

Area in m2	120
------------	-----

TYPE OF ENTITY (mark with X the choices)

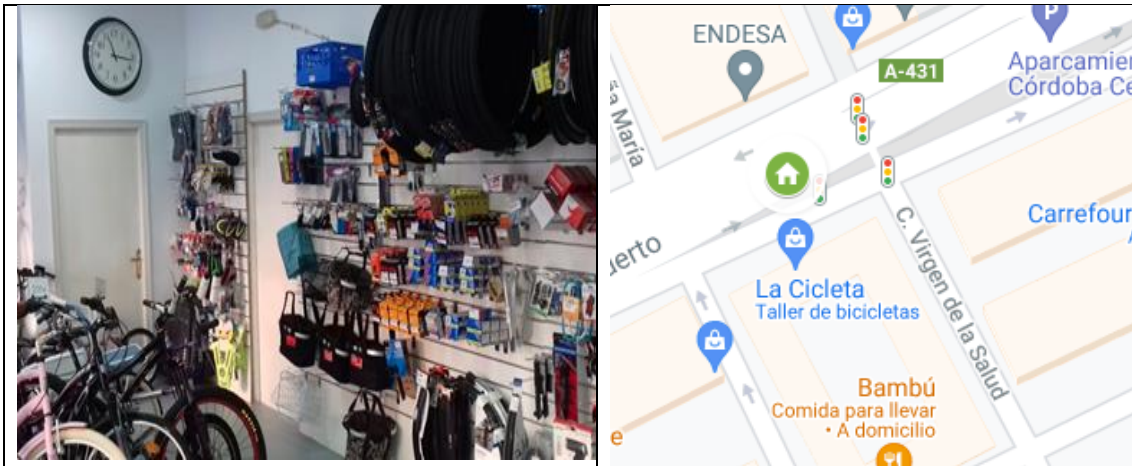
Public	Municipal	Regional	National	International
Non-profit NGO	Religious	Secular		
Private commercial	X			
Others, specify				

Volume of activity	year				quantity	
	Invoicing (€)				kg	Units
Activity	Sales	Rental	Loan	Exchange		
Books						
Clothes						
Small appliances						
Large appliances						
Tools						
Furniture and household items						
Others (specify): bicycle	X					
YEAR TOTAL						

MAP OF REUSE RESOURCES



REUSEMED



Entity's designation



LA PALABRERÍA

ADDRESS

Street	Number	Postal code	City
Plaza de la corredera, Mercado abastos	Puesto 23	14002	Córdoba
Telephones	650647383		
Website	https://www.todocoleccion.net/tienda/lapalabreri		
Social Networks	https://www.facebook.com/lapalabrerialibros		

GPS LOCALIZATION

Latitude N-S (DD)	Longitude E-O (DD)
37.88315853664721	-4.774119639028132

Area in m2	70
------------	----

TYPE OF ENTITY (mark with X the choices)

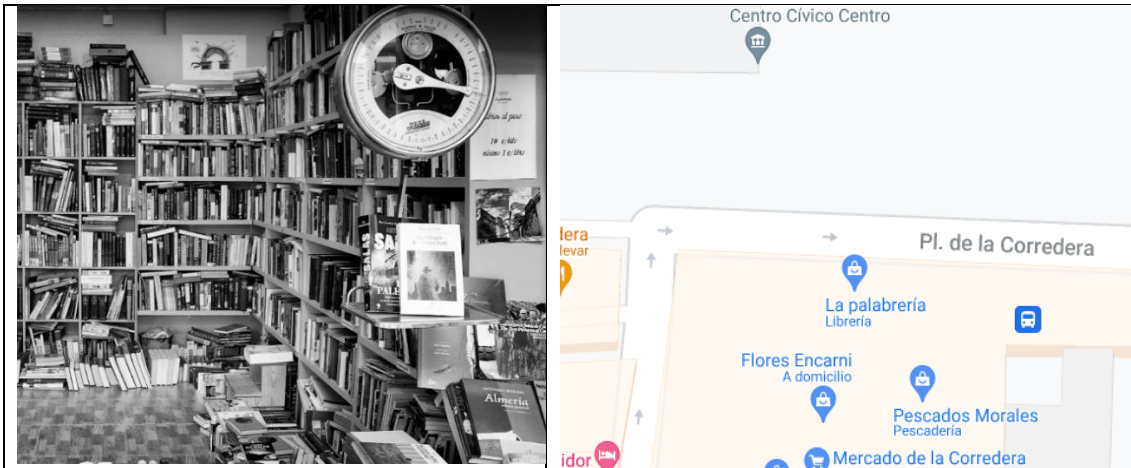
Public	Municipal	Regional	National	International
Non-profit NGO	Religious	Secular		
Private commercial	X			
Others, specify				

Volume of activity	year				quantity	
	Invoicing (€)				kg	Units
Activity	Sales	Rental	Loan	Exchange		
Books	X					
Clothes						
Small appliances						
Large appliances						
Tools						
Furniture and household items						
Others (specify): bicycle						
YEAR TOTAL						

MAP OF REUSE RESOURCES



REUSEMED





Entity's designation

LA TEJEDORA

ADDRESS

Street	Number	Postal code	City
Calle Gutiérrez de los Ríos	10	14002	Córdoba
Telephones	957485845		
Website	http://www.latejedora.org/		
Social Networks			

GPS LOCALIZATION

Latitude N-S (DD)	Longitude E-O (DD)
37.88388667521291	-4.773029017578087

Area in m2	120
------------	-----

TYPE OF ENTITY (mark with X the choices)

Public	Municipal	Regional	National	International
Non-profit NGO	Religious	Secular		
Private commercial	X			
Others, specify				

Volume of activity	year				quantity	
	Invoicing (€)					
Activity	Sales	Rental	Loan	Exchange	kg	Units
Books	X					
Clothes	X					
Small appliances						
Large appliances						
Tools						
Furniture and household items	X					
Others (specify):						
YEAR TOTAL						



MAP OF REUSE RESOURCES





Entity's designation

FUNDACION PROLIBERTAS

ADDRESS

Street	Number	Postal code	City
Calle María Cristina	8	14002	Córdoba
Telephones	957485325		
Website	https://www.prolibertas.org/		
E-mail	libertiendas@prolibertas.org		
Social Networks	https://www.facebook.com/fundacion.prolibertas/@FProlibertas https://www.instagram.com/fundacionprolibertas/		

GPS LOCALIZATION

Latitude N-S (DD)	Longitude E-O (DD)
37.88449233467647	-4.777129375255923

Area in m2	160
------------	-----

TYPE OF ENTITY (mark with X the choices)

Public	Municipal	Regional	National	International
Non-profit NGO	Religious	Secular		
	X			
Private commercial				
Others, specify				

Volume of activity	year				quantity	
	Invoicing (€)					
Activity	Sales	Rental	Loan	Exchange	kg	Units
Books						
Clothes	X					
Small appliances						
Large appliances						
Tools						
Furniture and household items						



Others (specify):						
YEAR TOTAL						

MAP OF REUSE RESOURCES





Entity's designation

LIBRERÍA EL LABERINTO

ADDRESS

Street	Number	Postal code	City
Ronda de Isasa	4	14003	Córdoba
Telephones	957486263		
Website	https://www.prolibertas.org/		
E-mail	libreriaantiquariaellaberinto@gmail.com		
Social Networks	https://www.facebook.com/libreriaantiquaria.ellaaberinto		

GPS LOCALIZATION

Latitude N-S (DD)	Longitude E-O (DD)
37.88032448646359	-4.774656289839016

Area in m2	80
------------	----

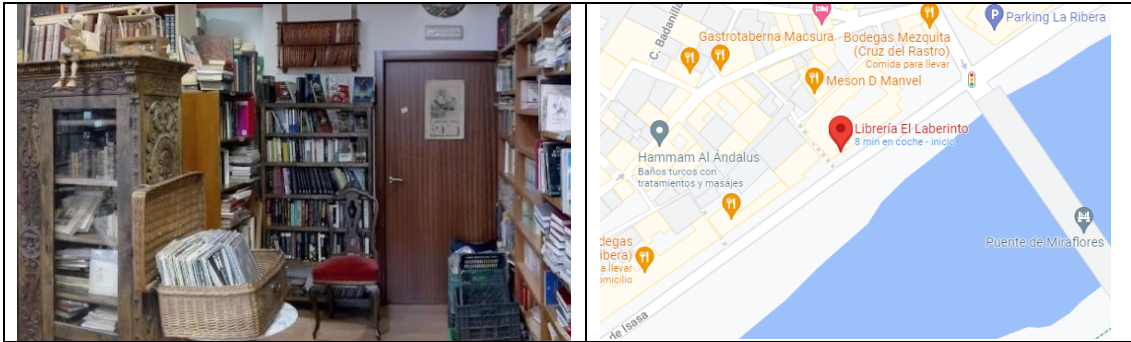
TYPE OF ENTITY (mark with X the choices)

Public	Municipal	Regional	National	International
Non-profit NGO	Religious	Secular		
Private commercial	X			
Others, specify				

Volume of activity	year				quantity	
	Invoicing (€)				kg	Units
Activity	Sales	Rental	Loan	Exchange		
Books	X					
Clothes						
Small appliances						
Large appliances						
Tools						
Furniture and household items						
Others (specify):						
YEAR TOTAL						



MAP OF REUSE RESOURCES





Entity's designation

LONJA VINTAGE

ADDRESS

Street	Number	Postal code	City
Calle García Lovera	s/n	14002	Córdoba
Telephones	957945778		
Website			
Social Networks	https://www.facebook.com/Lonja-Vintage-1343127385716326/		

GPS LOCALIZATION

Latitude N-S (DD)	Longitude E-O (DD)
37.88439072176105	-4.777558528673597

Area in m2	60
------------	----

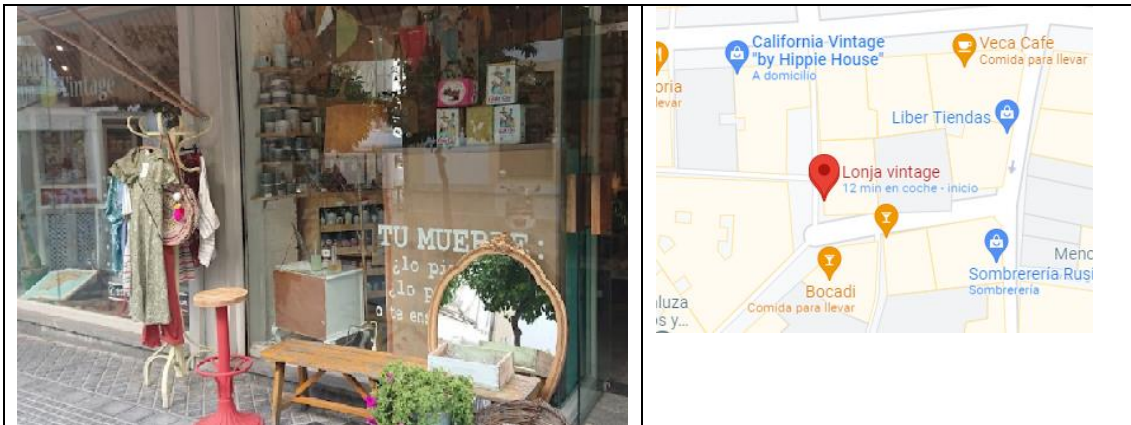
TYPE OF ENTITY (mark with X the choices)

Public	Municipal	Regional	National	International
Non-profit NGO	Religious	Secular		
Private commercial	X			
Others, specify				

Volume of activity	year				quantity	
	Invoicing (€)					
Activity	Sales	Rental	Loan	Exchange	kg	Units
Books	X					
Clothes						
Small appliances						
Large appliances						
Tools						
Furniture and household items	X					
Others (specify): Home decor and accessories	X					
YEAR TOTAL						



MAP OF REUSE RESOURCES





Entity's designation

MADRE CORAJE

ADDRESS

Street	Number	Postal code	City
Avenida Virgen de los Dolores	18	14004	Córdoba
Calle López Amo	4	14006	
Telephones	957275363; 620480110; 900114444		
Website	https://www.madrecoraje.org/		
E-mail	cordoba@madrecoraje.org		
Social Networks	https://www.facebook.com/AsociacionMadreCorajeCordoba		

GPS LOCALIZATION

Latitude N-S (DD)	Longitude E-O (DD)
37.87691750196342	-4.794894780984313
37.901213130316044	-4.778043998595253

Area in m2	125
------------	-----

TYPE OF ENTITY (mark with X the choices)

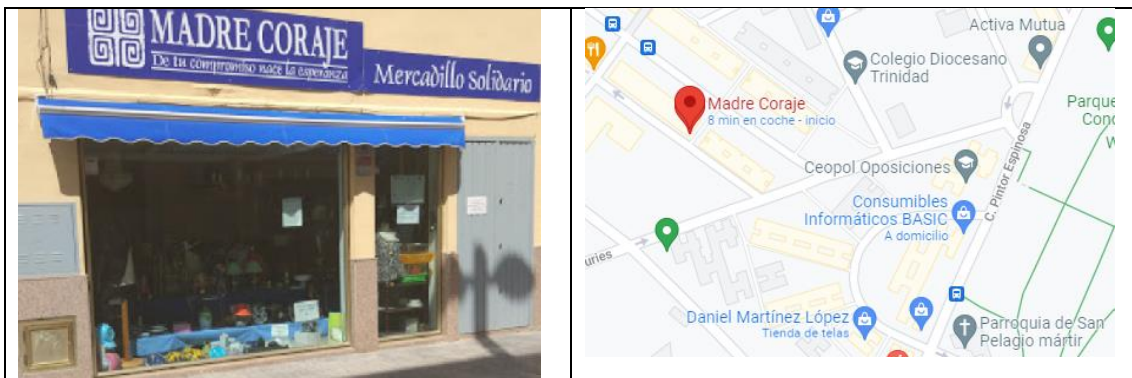
Public	Municipal	Regional	National	International
Non-profit NGO	Religious	Secular		
		X		
Private commercial				
Others, specify				

Volume of activity	year				quantity	
	Invoicing (€)				14.000	
Activity	Sales	Rental	Loan	Exchange	kg	Units
Books	X					
Clothes: Donation	X				35.000	
Small appliances	X					
Large appliances	X					
Tools						
Furniture and household items	X					



Others (specify): Home decor and accessories	X					
YEAR TOTAL						

MAP OF REUSE RESOURCES





Entity's designation

SOLIDARIDAD Y EMPLEO DE CÁRITAS CÓRDOBA

ADDRESS

Street	Number	Postal code	City
Calle Polonia	89	14004	Córdoba
Telephones	957294297		
Website	https://solemccor.com/		
Social Networks	https://www.facebook.com/Solemccor		

GPS LOCALIZATION

Latitude N-S (DD)	Longitude E-O (DD)
37.898157428938866	-4.7349729661921

Area in m2	2600
------------	------

TYPE OF ENTITY (mark with X the choices)

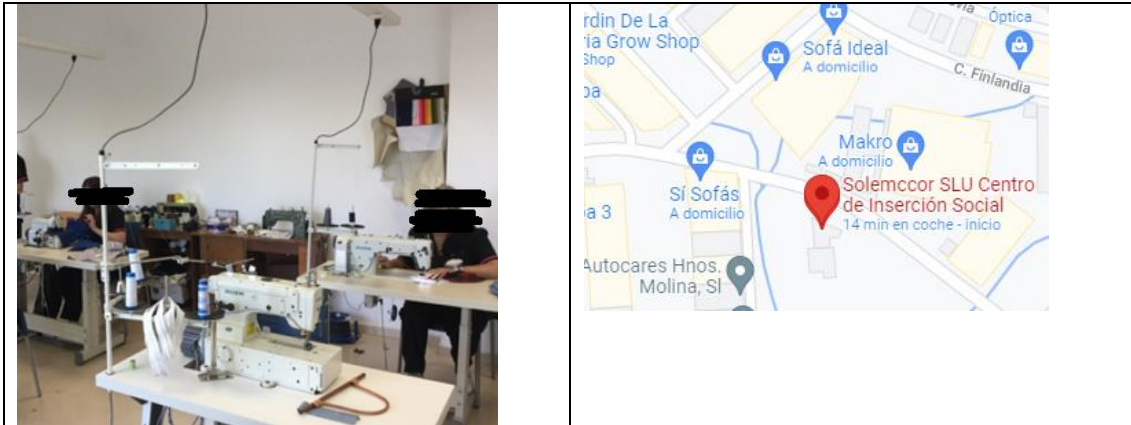
Public	Municipal	Regional	National	International
Non-profit NGO	Religious	Secular		
	X			
Private commercial				
Others, specify				

Volume of activity	year				quantity	
	Invoicing (€)				kg	Units
Activity	Sales	Rental	Loan	Exchange		
Books						
Clothes: Donation	X				700000	
Small appliances						
Large appliances						
Tools						
Furniture and household items						
Others (specify): Paperboard, paper	X				9000000	
YEAR TOTAL						



REUSEMED

MAP OF REUSE RESOURCES





Entity's designation

TE ACUERDAS

ADDRESS

Street	Number	Postal code	City
Calle Valdés Leal	1	14003	Córdoba
Telephones	957471043; 692272966		
Website	www.teacuardas.es		
E-mail	tienda@teacuardas.es		
Social Networks			

GPS LOCALIZATION

Latitude N-S (DD)	Longitude E-O (DD)
37.88351206458412	-4.781878891657873

Area in m2	90
------------	----

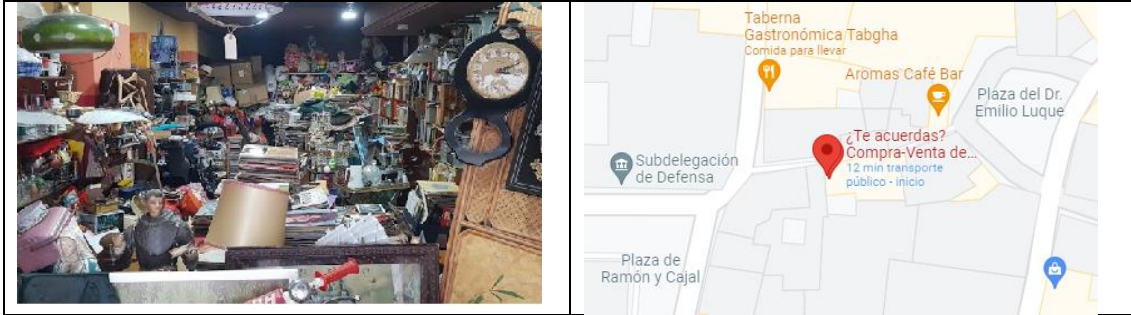
TYPE OF ENTITY (mark with X the choices)

Public	Municipal	Regional	Nati onal	International
Non-profit NGO	Religious	Secular		
Private commercial	X			
Others, specify				

Volume of activity	year				quantity	
	Invoicing (€)				kg	Units
Activity	Sales	Rental	Loan	Exchange		
Books	X					
Clothes:						
Small appliances	X					
Large appliances						
Tools						
Furniture and household items	X					
Others (specify): Vinyl records, toys	X					
YEAR TOTAL						



MAP OF REUSE RESOURCES





Entity's designation

TECNO OFICINAS

ADDRESS

Street	Number	Postal code	City
Calle Suecia	108	14014	Córdoba
Telephones	957326283; 607221511		
Website	http://www.tecno-oficinas.com/		
Social Networks	https://twitter.com/TecnoOficinas https://www.facebook.com/TecnoOficinas		

GPS LOCALIZATION

Latitude N-S (DD)	Longitude E-O (DD)
37.89903579273548	-4.727764657190987

Area in m2	400
------------	-----

TYPE OF ENTITY (mark with X the choices)

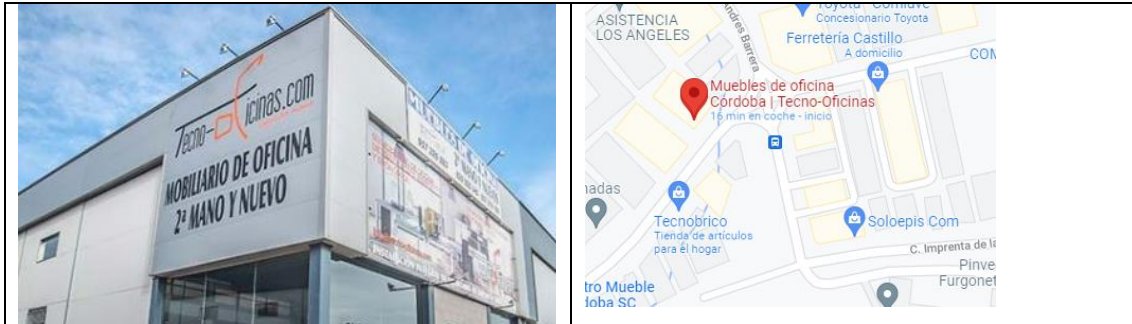
Public	Municipal	Regional	National	International
Non-profit NGO	Religious	Secular		
	X			
Private commercial				
Others, specify				

Volume of activity	year				quantity	
	Invoicing (€)				81.900	
Activity	Sales	Rental	Loan	Exchange	kg	Units
Books						
Clothes:						
Small appliances						
Large appliances						
Tools						
Furniture and household items	X					
Others (specify):						
YEAR TOTAL						



REUSEMED

MAP OF REUSE RESOURCES





Entity's designation

TUSOLUCION10

ADDRESS

Street	Number	Postal code	City
Calle Suecia	144	14014	Córdoba
Telephones	957325365; 659316548		
Website	https://tusolucion10.business.site/		
Social Networks	https://www.facebook.com/Tusolucion10/		

GPS LOCALIZATION

Latitude N-S (DD)	Longitude E-O (DD)
37.897552437146174	-4.7312494869010795

Area in m2	400
------------	-----

TYPE OF ENTITY (mark with X the choices)

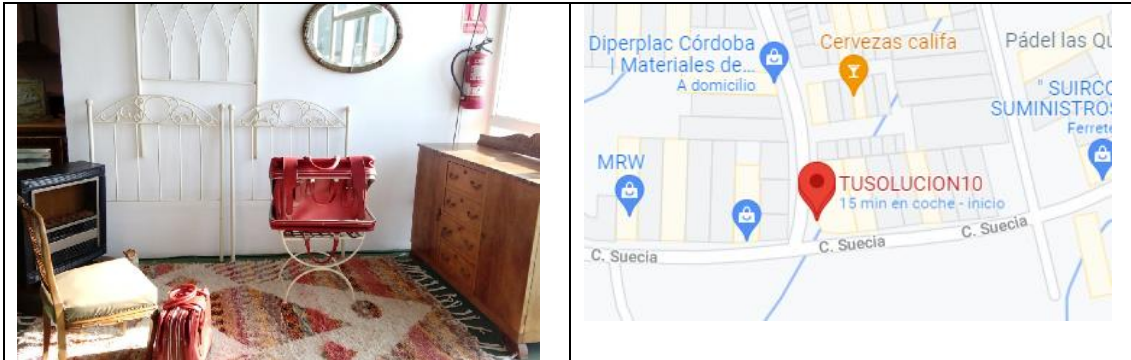
Public	Municipal	Regional	Nati	International
			onal	
Non-profit NGO	Religious	Secular		
Private commercial	X			
Others, specify				

Volume of activity	year				quantity	
	Invoicing (€)					
Activity	Sales	Rental	Loan	Exchange	kg	Units
Books						
Clothes:						
Small appliances						
Large appliances						
Tools						
Furniture and household items	X					
Others (specify):						
YEAR TOTAL						



REUSEMED

MAP OF REUSE RESOURCES





Entity's designation

ADEVIDA

ADDRESS

Street	Number	Postal code	City
Calle Isabel Losa	12	14001	Córdoba
Telephones	957492857		
Website	https://www.adevida.com		
Social Networks	@adevidacordoba		

GPS LOCALIZATION

Latitude N-S (DD)	Longitude E-O (DD)
37.88922339597274	-4.77537683270808

Area in m2	300
------------	-----

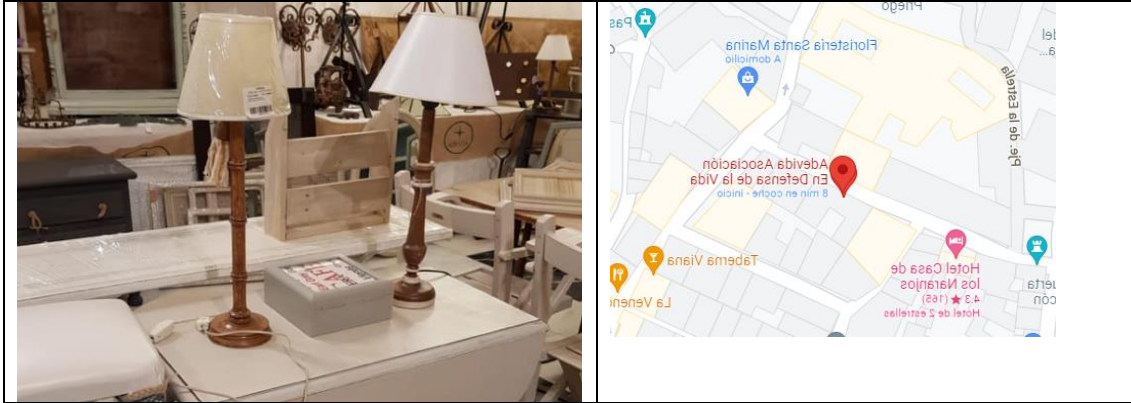
TYPE OF ENTITY (mark with X the choices)

Public	Municipal	Regional	National	International
Non-profit NGO	Religious	Secular		
		X		
Private commercial				
Others, specify				

Volume of activity	year				quantity	
	Invoicing (€)				kg	Units
Activity	Sales	Rental	Loan	Exchange		
Books	X					
Clothes	X					
Small appliances						
Large appliances						
Tools						
Furniture and household items	X					
Others (specify): Toys	X					
YEAR TOTAL						



MAP OF REUSE RESOURCES





Map of facilities and resources dedicated to reuse/preparation for reuse

For the purposes of this work, the following concepts are to be considered:

- **Reuse:** any operation by which products or components that are not considered waste are reused for the same purpose for which they were originally conceived.
- **Preparation for reuse:** control, cleaning and repair operations whereby products or their components that have become waste are prepared for reuse without further intensive treatment.

Territorial scope

1	Entity that completes the information	Ministry of Local Administration (MOLA/ P2)
2	City name	Deir Allaa
3	Number of inhabitants	61,000 total population.
4	Area of the municipality (km ²)	61.053
5	Urban area developed (km ²)	-

What best characterizes your region?

- ~~1. Predominantly rural~~
- 2. Predominantly urban
- 3. Predominantly suburban
- 4. Other (specify):

What is the general regulatory approach to reuse and / or readiness for reuse related activities in your region?

- 1. Passive, there is no regulation or indirect regulation regarding reuse
- ~~2. Some indirect regulation, but without specific measures regarding reuse~~
- 3. There are regulations on reuse in place.
- 4. There are regulations on reuse and they are respected
- 5. There is a regulation on reuse, but the requirements are not always met
- 6. Other (specify):



Describe in more detail the regulatory situation with regard to reuse in your region (any specific legislation, regional guidelines ...)

In Jordan we do not have specific regulation addressing the Reuse topic lonely. However, we have two main legislations that addressing Reuse as one of the main three Rs principles (Reduce, Reuse, and Recycling) that focusing on treating waste and improving the Solid Waste Management (SWM) field, namely:

1. National Municipal Solid Waste Management Strategy (2015 – 2034).
2. Waste Management Framework Law No. (16/2020).

Regional activities related to reuse are mainly associated with:

1. Public authorities
2. Private companies and / or private initiatives
- ~~3. Social or charitable entities~~
4. Voluntary initiatives
5. Other (specify):

As part of the overall management of waste, are government financial aid options available for its reuse and / or preparation for reuse activities?

1. Absence of government financial aid to support activities related to reuse
2. There are limited measures of direct / indirect financial support
- ~~3. There are some direct / indirect financial support measures but nothing significant~~
4. There are many direct / indirect financial support measures, but nothing significant
5. There are some important measures of direct / indirect financial support
6. There are many important measures of direct / indirect financial support
7. Other (specify):

Describe in more detail the financial situation in your region as much as reusing or preparing for reuse concerns (any specific financial support programs, benefits ...)

Currently, we have in Jordan a few international fund that including component for supporting the circular economy activities (i.e. recycling, reuse ... etc.), which they are



considered as indirect financial support to such activities, mainly, they are focusing more on recycling and composting activities.

Is there a website or mobile application that facilitates the purchase-sale, donation, loan or exchange of products? **No, there is not.**

Designation	Activity (1,2,3,4)*	Scope (I,N,R,L)**
Al- Ghaddac Charity Association	1	N
Bab Al- Rayan Charity Association	1	N

* 1 Buy and sell. 2 Donation. 3 Loan. 4 Exchange

** I=International, N=National, R=Regional, L=Local

LIST OF REUSE / PREPARATION FOR REUSE ENTITIES

***Repeat this page for every different entity**

Entity's designation

[Al- Ghaddac Charity Association](#)

ADDRESS

Street	Number	Postal code	City
		18210	Deir Allaa
Telephones	+962 7 78441847		
Website Social Networks	https://www.facebook.com/groups/568994633644621		

GPS LOCALIZATION

Latitude N-S (DD)	Longitude E-O (DD)

Area in m2	
------------	--

TYPE OF ENTITY (mark with X the choices)



REUSEMED

Public	Municipal	Regional	National	International
Non-profit NGO	Religious	Secular		
		x		
Private commercial				
Others, specify				

Volume of activity	year			NA	quantity	
	Invoicing (€)			NA		
Activity	Sales	Rental	Loan	Exchange	kg	Units
Books						
Clothes						
Small appliances						
Large appliances						
Tools						
Furniture and household items						
Others (specify)						
YEAR TOTAL						

MAP OF REUSE RESOURCES





Entity's designation

Bab Al- Rayan Charity Association

ADDRESS

Street	Number	Postal code	City
		18210	Deir Allaa
Telephones	+962 7 76601003		
Website Social Networks	https://www.facebook.com/%D8%AC%D9%85%D8%B9%D9%8A%D8%A9-%D8%B3%D9%8A%D8%AF%D8%A7%D8%A-%D8%A8%D8%A7%D8%A8-%D8%A7%D9%84%D8%B1%D9%8A%D8%A7%D9%86-%D8%A7%D9%84%D8%AE%D9%8A%D8%B1%D9%8A%D8%A9-629686927093090/?ti=as		

GPS LOCALIZATION

Latitude N-S (DD)	Longitude E-O (DD)

Area in m2	
------------	--

TYPE OF ENTITY (mark with X the choices)

Public	Municipal	Regional	National	International
Non-profit NGO	Religious	Secular		
		x		
Private commercial				
Others, specify				

Volume of activity	year	NA	quantity
--------------------	------	----	----------



Activity	Invoicing (€)			NA	kg	Units
	Sales	Rental	Loan	Exchange		
Books						
Clothes						
Small appliances						
Large appliances						
Tools						
Furniture and household items						
Others (specify)						
YEAR TOTAL						

MAP OF REUSE RESOURCES



REUSEMED





Map of facilities and resources dedicated to reuse/preparation for reuse

For the purposes of this work, the following concepts are to be considered:

- **Reuse:** any operation by which products or components that are not considered waste are reused for the same purpose for which they were originally conceived.
- **Preparation for reuse:** control, cleaning and repair operations whereby products or their components that have become waste are prepared for reuse without further intensive treatment.

Territorial scope

1	Entity that completes the information	Municipality of Sakiè Ezzit
2	City name	Sfax
3	Number of inhabitants	53243
4	Area of the municipality (km ²)	67,78
5	Urban area developed (km ²)	≈ 20,40

What best characterizes your region?

1. Predominantly rural
2. Predominantly urban
3. Predominantly suburban
4. Other (specify):

What is the general regulatory approach to reuse and / or readiness for reuse related activities in your region?

1. Passive, there is no regulation or indirect regulation regarding reuse
2. Some indirect regulation, but without specific measures regarding reuse
3. There are regulations on reuse in place.
4. There are regulations on reuse and they are respected
5. There is a regulation on reuse, but the requirements are not always met
6. Other (specify):

Describe in more detail the regulatory situation with regard to reuse in your region (any specific legislation, regional guidelines ...)



There is no regulation or indirect regulation regarding reuse in Sakiet Ezzit region.

Regional activities related to reuse are mainly associated with:

- ✓ Public authorities
- 2. Private companies and / or private initiatives
- ✓ Social or charitable entities
- ✓ Voluntary initiatives
- 5. Other (specify):

As part of the overall management of waste, are government financial aid options available for its reuse and / or preparation for reuse activities?

- ✓ Absence of government financial aid to support activities related to reuse
- 2. There are limited measures of direct / indirect financial support
- 3. There are some direct / indirect financial support measures but nothing significant
- 4. There are many direct / indirect financial support measures, but nothing significant
- ✓ There are some important measures of direct / indirect financial support
- 6. There are many important measures of direct / indirect financial support
- 7. Other (specify):

Describe in more detail the financial situation in your region as much as reusing or preparing for reuse concerns (any specific financial support programs, benefits ...)



Sakiet Ezzit constitutes the oldest suburban municipality (created in 1957) and the most important agglomeration of Sfax. As its name suggests, Sakiet Ezzit (oil pan) is a major center for olives processing and marketing. The governorate of Sfax provides 40% of national production provided mainly by Sakiet Ezzit delegation which hosts 25 traditional or modern oil mills. Today, its activities are moving towards services: Sakiet Ezzit is thus home to the largest automotive technical inspection center in the region, with a rate of around 100 vehicles checked daily. It also houses a municipality, a post office, nine bank branches and several other service establishments (CNSS, CNAM, financial receipts, etc.). However, waste management did not develop and reuse circuits have no financial support programs no government financial aid just some associations movements for environment protection and waste reduce. It is important to notice that in Sakiet Ezzit region there is professionals specializing in thrift stores, private workers on special waste reuse us informatic materials, bicycles, motors and furniture.

Is there a website or mobile application that facilitates the purchase-sale, donation, loan or exchange of products?

Designation	Activity (1,2,3,4)*	Scope (I,N,R,L)**
https://www.facebook.com/7elmet.ajyel	2, 4	L
https://www.facebook.com/associationsanteenvironnement	2,4	L

* 1 Buy and sell. 2 Donation. 3 Loan. 4 Exchange

** I=International, N=National, R=Regional, L=Local



LIST OF REUSE / PREPARATION FOR REUSE ENTITIES

***Repeat this page for every different entity**

Entity's designation

Generation's Dream association

ADDRESS

Street	Number	Postal code	City
Hedi Chaker	RQ34+QV 6	3021	Sfax
Telephones	95 492 218		
Website			
Social Networks	https://www.facebook.com/7elmet.ajyel/		

GPS LOCALIZATION

Latitude N-S (DD)	Longitude E-O (DD)
34.80456	10.75708

Area in m2	40
------------	----

TYPE OF ENTITY (mark with X the choices)

Public	Municipal	Regional	Nati onal	International
Non-profit NGO	Religious	Secular		
		X		
Private commercial				
Others, specify				

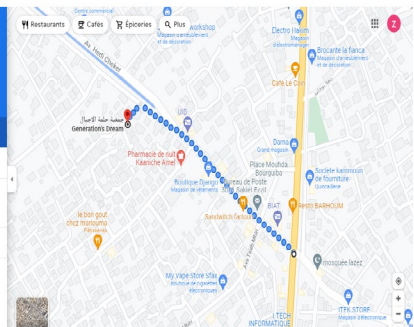
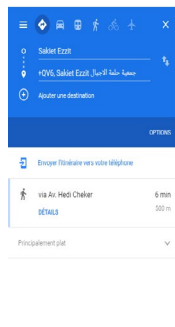
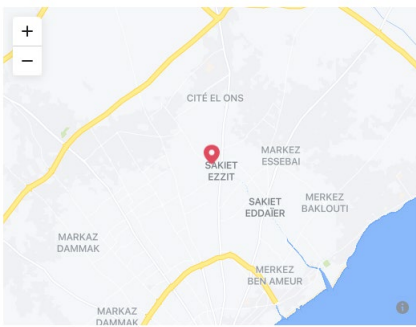
Volume of activity	year				quantity	
	Invoicing (€)				kg	Units
Activity	Sales	Rental	Loan	Exchange		
Books				X	1000	
Clothes						
Small appliances						
Large appliances						
Tools						
Furniture and household items						
Others (specify) Papers for recycle	X				17	Tons



YEAR TOTAL	18	Tons
-------------------	-----------	-------------

MAP OF REUSE RESOURCES

Map/Picture/Diagram





Entity's designation

Ahmed Yassine Moalla informatic Material repair

ADDRESS

Street	Number	Postal code	City
Mokhtar Ziedi	301	3021	Sfax
Telephones	20062568		
Website Social Networks			

GPS LOCALIZATION

Latitude N-S (DD)	Longitude E-O (DD)
34.79965	10.77108

Area in m2	150
------------	-----

TYPE OF ENTITY (mark with X the choices)

Public	Municipal	Regional	National	International
Non-profit NGO	Religious	Secular		
Private commercial	X			
Others, specify				

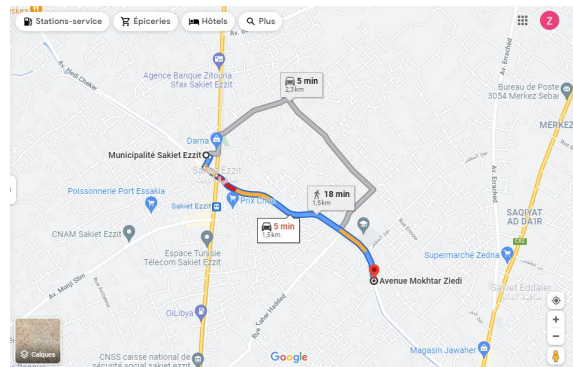
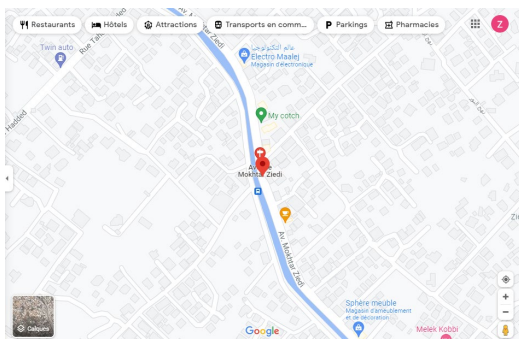
Volume of activity	year				quantity	
	Invoicing (€)				kg	Units
Activity	Sales	Rental	Loan	Exchange		
Books						
Clothes						
Small appliances						
Large appliances						
Tools						
Furniture and household items						
Others (specify) informatic material				X	Unkown	
YEAR TOTAL					Unkown	



REUSEMED

MAP OF REUSE RESOURCES

Map/Picture/Diagram





Entity's designation

Fripe cameleon

ADDRESS

Street	Number	Postal code	City
Street Tanyour 0.5km Street monji slim		3021	Sfax
Telephones	44164865		
Website Social Networks	https://www.facebook.com/Cameleon.sfax/photos/?ref=page_internal		

GPS LOCALIZATION

Latitude N-S (DD)	Longitude E-O (DD)
34.79965	10.77108

Area in m2	150
------------	-----

TYPE OF ENTITY (mark with X the choices)

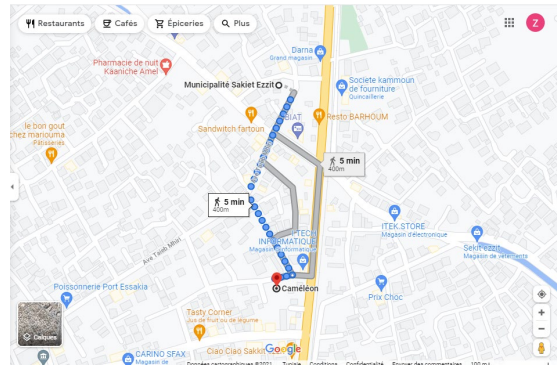
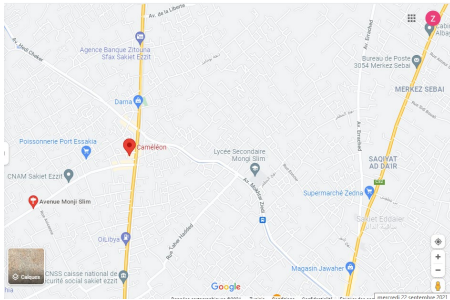
Public	Municipal	Regional	National	International
Non-profit NGO	Religious	Secular		
Private commercial	X			
Others, specify				

Volume of activity	year				quantity	
	Invoicing (€)				kg	Units
Activity	Sales	Rental	Loan	Exchange		
Books						
Clothes	X				Unknown	
Small appliances						
Large appliances						
Tools						
Furniture and household items						
Others (specify)						
YEAR TOTAL					Unknown	



MAP OF REUSE RESOURCES

Map/Picture/Diagram





Entity's designation

Yassine Ksemtini for bicycle's repair

ADDRESS

Street	Number	Postal code	City
Taeb Mhiri		3021	Sfax
Telephones	22609937		
Website	No website		
Social Networks			

GPS LOCALIZATION

Latitude N-S (DD)	Longitude E-O (DD)
34.800086	10.756347

Area in m2	12
------------	----

TYPE OF ENTITY (mark with X the choices)

Public	Municipal	Regional	National	International
Non-profit NGO	Religious	Secular		
Private commercial	X			
Others, specify				

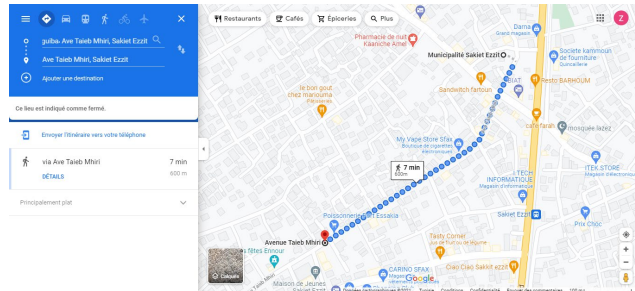
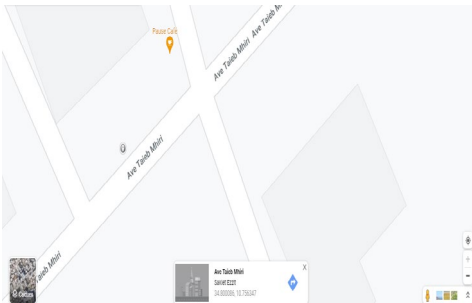
Volume of activity	year				quantity	
	Invoicing (€)				kg	Units
Activity	Sales	Rental	Loan	Exchange		
Books						
Clothes						
Small appliances						
Large appliances						
Tools						
Furniture and household items						
Others (Bicycle)	X				Unknown	
YEAR TOTAL					Unknown	



REUSEMED

MAP OF REUSE RESOURCES

Map/Picture/Diagram





Entity's designation

Health and Environment Association

ADDRESS

Street	Number	Postal code	City
Habib Maazoun, beb Bhar		3000	Sfax
Telephones	22609937		
Website	https://www.facebook.com/associationsanteenvi		
Social Networks	ronnement/?ref=page_internal		

GPS LOCALIZATION

Latitude N-S (DD)	Longitude E-O (DD)
34.73349	10.76297

Area in m2	40
------------	----

TYPE OF ENTITY (mark with X the choices)

Public	Municipal	Regional	National	International
Non-profit NGO	Religious	Secular		
		X		
Private commercial				
Others, specify				

Volume of activity	year				quantity	
	Invoicing (€)				kg	Units
Activity	Sales	Rental	Loan	Exchange		
Books						
Clothes						
Small appliances						
Large appliances						
Tools						
Furniture and household items						
Others (streamers)				X	Unkno wn	
YEAR TOTAL					Unkno wn	



REUSEMED

MAP OF REUSE RESOURCES

Map/Picture/Diagram

